

Emergency Response to Earthquakes



Mark Ghillarducci, Director, California Governor's Office of Emergency Services

Brian Marshall, Fire & Rescue Chief, California Governor's Office of Emergency Services

FIRE & RESCUE BRANCH

THE CALIFORNIA GOVERNOR'S OFFICE OF EMERGENCY SERVICES, FIRE AND RESCUE BRANCH IS RESPONSIBLE FOR THE DEVELOPMENT, IMPLEMENTATION AND COORDINATION OF THE CALIFORNIA FIRE SERVICE AND RESCUE EMERGENCY MUTUAL AID PLAN. THE PLAN IS DEVELOPED AND UPDATED UNDER GUIDANCE AND APPROVAL OF THE FIRE AND RESCUE SERVICE ADVISORY COMMITTEE/FIRESCOPE BOARD OF DIRECTORS. THE CONTINUED SUCCESS OF CALIFORNIA'S UNIQUE AND HIGHLY-EFFECTIVE FIRE AND RESCUE MUTUAL AID SYSTEM DEMANDS A MAXIMUM LEVEL OF UNDERSTANDING AND COOPERATION BY ALL WHO USE AND SUPPORT IT.



FIRE AND RESCUE DIVISIONS

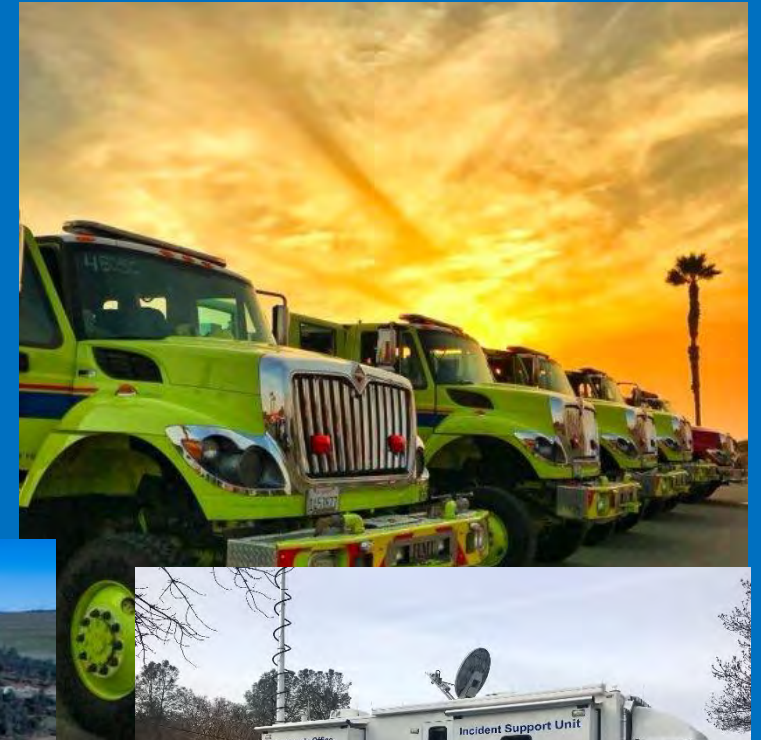
The Fire & Rescue Branch is comprised of several divisions in order to provide the coordination and collaboration required by the diverse needs of the fire service in California.

- EXECUTIVE
- ADMINISTRATION
- OPERATIONS
- SPECIAL OPERATIONS
- SUPPORT SERVICES
- FIRESCOPE
- LOGISTICS
- TRAINING

OPERATIONS



Picture: @BurbankPD



OPERATIONS

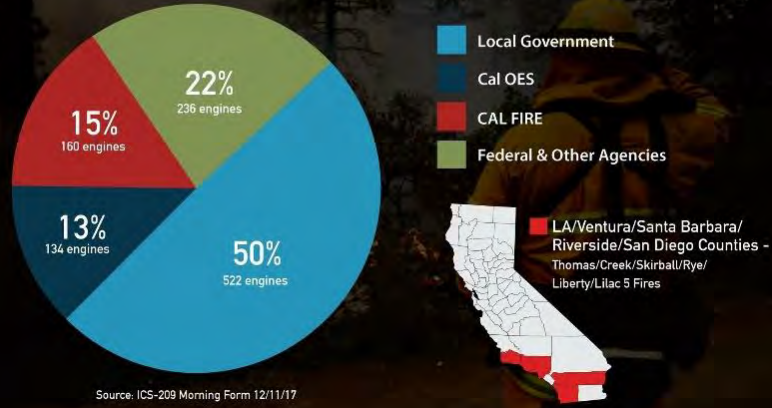
The Operations Division, coordinates the California Fire and Rescue Mutual Aid System. The Mutual Aid System is an All-Hazards response system including response to Fires, Floods, Earthquakes, Tsunamis, Hazardous Materials and other disasters. Other programs in Operations include:

- [Fire Management Assistance Grant \(FMAG\) Approval and Briefing](#)
- [California Fire Service and Rescue Emergency Mutual Aid System](#)
- [Pre-Positioning](#)
- [After Action Reports](#)

OPERATION DIVISION

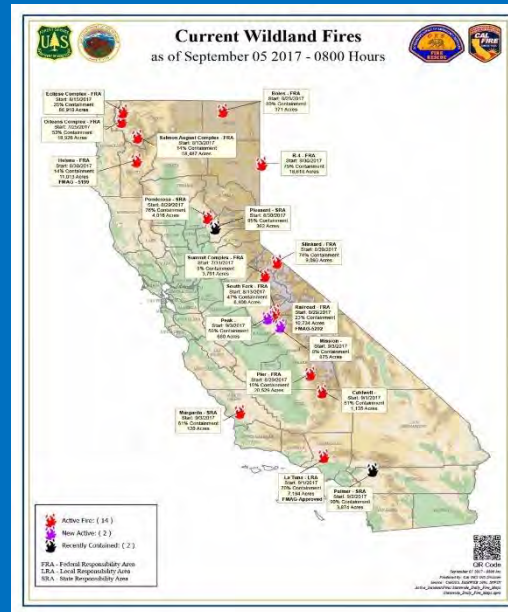
CALIFORNIA'S MUTUAL AID SYSTEM AT WORK

Snapshot: Fire Engines on the December 2017 Wildfires



Source: ICS-209 Morning Form 12/11/17

COORDINATION AND COLLABORATION



OPERATIONS

TRACKING RESOURCES

WHAT DOES THE INCIDENT NEED AND WHATS AVAILABLE

ALL OES & LOCAL GOVERNMENT EQUIPMENT STATUS-LIVE

STATEWIDE ICS-405-LIVE

ALL OES Equipment Status

5/18/2018 8:53:08

All OES Equipment Status

Total Available Resources

OES	Type I	Type II	WT	Support Unit	LG ST Total	LG ST T1	LG ST T2	LG ST T6	REMS	DIV.	SOFR	FOBS	EMPF	EMTF
Available	81	34	12	11	34	33	18	6						
Assigned	0	0	0	0	0	0	0	0						
Out of Service	33	6	0	0										

Region I

OES	Type I	Type II	WT	Support Unit	LG ST Total	LG ST T1	LG ST T2	LG ST T6	REMS	DIV.	SOFR	FOBS	EMPF	EMTF
Available	18	9	2	Available										
Assigned	0	0	0											
Out of Service	2	1	0											

Region II

OES	Type I	Type II	WT	Support Unit	LG ST Total	LG ST T1	LG ST T2	LG ST T6	REMS	DIV.	SOFR	FOBS	EMPF	EMTF
Available	18	9	2	Available	21	28	11	6	0					
Assigned	0	0	0											
Out of Service	10	0	0											

Region III

OES	Type I	Type II	WT	Support Unit	LG ST Total	LG ST T1	LG ST T2	LG ST T6	REMS	DIV.	SOFR	FOBS	EMPF	EMTF
Available	0	0	0	Available										
Assigned	0	0	0											
Out of Service	0	0	0											

OES EQUIPMENT STATUS TOTAL

ALL OES Equipment Status

OES REGION II EQUIPMENT RESTAT

Reg. II Dispatch - 925.245.0420

5/18/2018 8:37:03

Coordinator: Chief Rocha - 510.683.3400

OES Assistant Chiefs: Status: Note

Assistant Chief Dave Franklin - 550.426.2185: Unavailable: Back East until Sun - 6:20 @ 1800

Assistant Chief Mark Courson - 816.281.4484: Available:

Nationwide NICC Preparedness Level: 2

ONCC Prep. Level: 1

NorCal MACS Mode: 1

OSCC Prep. Level: 2

SOCAL MACS Mode: 1

Situation Report:

Unit	OA	Agency ID	Status	Out of Service Date	Assigned / Notes	Unit	OA	Agency ID	Status	Out of Service Date	Assigned / Notes
TYPE I ENGINE						TYPE II ENGINE					
E-286	XSN	Petaluma PD	Available			E-8211	XAL	Fremont PD	Available		
E-287	XSO	Berkeley FD	Available			E-8222	XAL	Oakland FD	Available		
E-288	XSM	North County FA	Available			E-8233	XAL	Alameda Co. FPD	Available		
E-289	XSC	Santa Clara CPD	Available			E-8234	XAL	Hayward FD	Available		
E-290	XSC	Mt. View FD	Available			E-8235	XAL	Alameda Co. FPD	Available		
E-291	XSM	San Mateo PD	Available			TOTAL	Available	0	Assigned	0	
E-294	XAL	Alameda City	Available			OES Water Tenders					
E-300	XCC	El Cerrito PD	Available			WT-01	XSN	Windsor FPD	Available		
E-312	XMY	Mont. Co. Fire	Out of Service			WT-02	XSN	Maricello 6011	Available		
E-314	XSN	San Jo. F&D	Available								

ALL OES Equipment Status

CA STATEWIDE MACS 405 AVAILABLE RESOURCE STATUS

5/18/2018 8:51:05

Region I	Region II	Region III	Region IV	Region V	Region VI
59	64	170	138	103	81
195	170	241	178	11	9
TOTAL ENGINES AVAILABLE: 728					

STATEWIDE CAL OES MACS 405 AVAILABLE RESOURCE STATUS

5/18/2018 8:51:05

Region I	Region II	Region III	Region IV	Region V	Region VI
4	3	3	3	2	1
4	1	1	3	4	1
2	2	2	2	2	2
ICJ Total: 21					
ICJ Total: 12					
Available Single Resources: 45					
Available Strike Teams: 76					

OPERATIONS

SITUATIONAL AWARENESS & INTEL

FIRE DUTY OFFICER ICS-214-LIVE

ICS-209

INCIDENT RESOURCE TRACKING-LIVE

2018 FDO LOG

File Edit View Insert Format Data Tools Add-ons Help All changes saved in Drive

100% - \$ % _ 0.00 123 - Arial - 18 - B I U A

Fire & Rescue Duty Officer Log

DATE	TIME	REGION	EVENT	Notes
4/19	1000	ALL	Notification	AC Franklin assumes FDO for AC Bondshu
	1603	R-VI	Wildland	Caltrans has advised that Lifeline Route US 395 was closed from Junction of SR 136 to 10 miles north of Lone Pine @ Manzanar in Inyo County due to the Moffat fire. Forwarded to 5200, 5201, 5203 and 5216
	1648	R-VI	Update	Update email regarding Moffat Fire - forwarded to 5200, 5201, 5203 & 5216
	1726	R-VI	Update	Update email regarding Moffat Fire - US395 is back open - forwarded to 5201, 5203 & 5216
	1904	R-VI	Update	Update email regarding Moffat Fire - forwarded to 5201, 5202 & 5216
4/20	656	R-VI	Update	Update email regarding Moffat Fire - forwarded to 5201, 5202 & 5216
	702	ALL	Notification	FDO Morning Report sent out
	746	ALL	Notification	Updated FDO Morning Report sent out
	1758	R-VI	Update	Update email regarding Moffat Fire - forwarded to 5201
4/21	727	ALL	Notification	FDO Morning Report sent out
	900	ALL		Transition with 5212 and assumed FDO

2 FDO Schedule 2/23/18 - 4/19-4/26 - BB - 5/10-5/17 - JG - 5/17-5/24 - KB

Selected Incident Intelligence Summaries (ICS-209)

Incident Status Summary (ICS-209)

1. Incident Name: THOMAS	2. Incident Number: CA-VNC-103156
3. Report Version (check one box): Initial X Update Final	4. Incident Commander(s) & Agency or Organization: von Tillow USFS Savage ICT1(T)
5. Incident Management Organization: X Unified Command	6. Incident Start Date/Time: Date: 12/04/2017 Time: 1835 PST
7. Current Incident Size or Area Involved (use unit label - e.g., "Acres", "Square Miles"): 281620 Acres	8. Incident Type: Wildfire
9. Incident Description: C. Cause: Unknown	10. Incident Complexity Level: X Single Complex
11. Report Time Period: From Date/Time: 12/26/2017 0545 PST To Date/Time: 12/26/2017 0615 PST	D. Fire Suppression Strategy: Strategy Percent (%) Monitor

2018 FIRES/INCIDENTS

File Edit View Insert Format Data Tools Form Add-ons Help All changes saved in Drive

50% - \$ % _ 0.00 123 - Arial - 10 - B I U A

OES

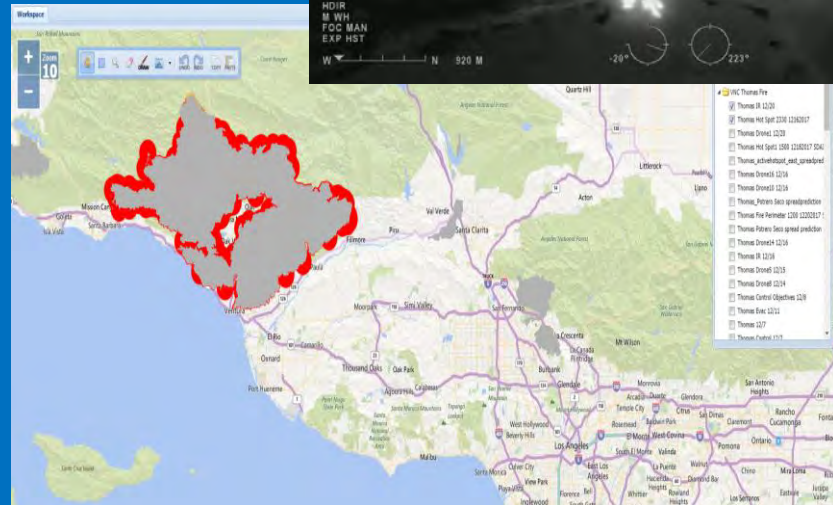
5/18/2018 8:59:55

Incident Number: CA-VNC-103156										THOMAS										Region / County: R1 Ventura											
Strike Teams Task Forces										Local Government										Single Resources											
Agency	Unit	Type	Count	Position	Status	Location	Remarks	Priority	Notes	Agency	Unit	Type	Count	Position	Status	Location	Remarks	Priority	Notes	Agency	Unit	Type	Count	Position	Status	Location	Remarks	Priority	Notes		
USFS	103156	1	1	IC	Assigned	CA-VNC-103156		1		USFS	103156	1	1	IC	Assigned	CA-VNC-103156		1		USFS	103156	1	1	IC	Assigned	CA-VNC-103156		1			
USFS	103156	1	1	IC	Assigned	CA-VNC-103156		1		USFS	103156	1	1	IC	Assigned	CA-VNC-103156		1		USFS	103156	1	1	IC	Assigned	CA-VNC-103156		1		1	
USFS	103156	1	1	IC	Assigned	CA-VNC-103156		1		USFS	103156	1	1	IC	Assigned	CA-VNC-103156		1		USFS	103156	1	1	IC	Assigned	CA-VNC-103156		1		1	
USFS	103156	1	1	IC	Assigned	CA-VNC-103156		1		USFS	103156	1	1	IC	Assigned	CA-VNC-103156		1		USFS	103156	1	1	IC	Assigned	CA-VNC-103156		1		1	
USFS	103156	1	1	IC	Assigned	CA-VNC-103156		1		USFS	103156	1	1	IC	Assigned	CA-VNC-103156		1		USFS	103156	1	1	IC	Assigned	CA-VNC-103156		1		1	
USFS	103156	1	1	IC	Assigned	CA-VNC-103156		1		USFS	103156	1	1	IC	Assigned	CA-VNC-103156		1		USFS	103156	1	1	IC	Assigned	CA-VNC-103156		1		1	
USFS	103156	1	1	IC	Assigned	CA-VNC-103156		1		USFS	103156	1	1	IC	Assigned	CA-VNC-103156		1		USFS	103156	1	1	IC	Assigned	CA-VNC-103156		1		1	
USFS	103156	1	1	IC	Assigned	CA-VNC-103156		1		USFS	103156	1	1	IC	Assigned	CA-VNC-103156		1		USFS	103156	1	1	IC	Assigned	CA-VNC-103156		1		1	
USFS	103156	1	1	IC	Assigned	CA-VNC-103156		1		USFS	103156	1	1	IC	Assigned	CA-VNC-103156		1		USFS	103156	1	1	IC	Assigned	CA-VNC-103156		1		1	
USFS	103156	1	1	IC	Assigned	CA-VNC-103156		1		USFS	103156	1	1	IC	Assigned	CA-VNC-103156		1		USFS	103156	1	1	IC	Assigned	CA-VNC-103156		1		1	
USFS	103156	1	1	IC	Assigned	CA-VNC-103156		1		USFS	103156	1	1	IC	Assigned	CA-VNC-103156		1		USFS	103156	1	1	IC	Assigned	CA-VNC-103156		1		1	
USFS	103156	1	1	IC	Assigned	CA-VNC-103156		1		USFS	103156	1	1	IC	Assigned	CA-VNC-103156		1		USFS	103156	1	1	IC	Assigned	CA-VNC-103156		1		1	
USFS	103156	1	1	IC	Assigned	CA-VNC-103156		1		USFS	103156	1	1	IC	Assigned	CA-VNC-103156		1		USFS	103156	1	1	IC	Assigned	CA-VNC-103156		1		1	
USFS	103156	1	1	IC	Assigned	CA-VNC-103156		1		USFS	103156	1	1	IC	Assigned	CA-VNC-103156		1		USFS	103156	1	1	IC	Assigned	CA-VNC-103156		1		1	
USFS	103156	1	1	IC	Assigned	CA-VNC-103156		1		USFS	103156	1	1	IC	Assigned	CA-VNC-103156		1		USFS	103156	1	1	IC	Assigned	CA-VNC-103156		1		1	
USFS	103156	1	1	IC	Assigned	CA-VNC-103156		1		USFS	103156	1	1	IC	Assigned	CA-VNC-103156		1		USFS	103156	1	1	IC	Assigned	CA-VNC-103156		1		1	
USFS	103156	1	1	IC	Assigned	CA-VNC-103156		1		USFS	103156	1	1	IC	Assigned	CA-VNC-103156		1		USFS	103156	1	1	IC	Assigned	CA-VNC-103156		1		1	
USFS	103156	1	1	IC	Assigned	CA-VNC-103156		1		USFS	103156	1	1	IC	Assigned	CA-VNC-103156		1		USFS	103156	1	1	IC	Assigned	CA-VNC-103156		1		1	
USFS	103156	1	1	IC	Assigned	CA-VNC-103156		1		USFS	103156	1	1	IC	Assigned	CA-VNC-103156		1		USFS	103156	1	1	IC	Assigned	CA-VNC-103156		1		1	
USFS	103156	1	1	IC	Assigned	CA-VNC-103156		1		USFS	103156	1	1	IC	Assigned	CA-VNC-103156		1		USFS	103156	1	1	IC	Assigned	CA-VNC-103156		1		1	
USFS	103156	1	1	IC	Assigned	CA-VNC-103156		1		USFS	103156	1	1	IC	Assigned	CA-VNC-103156		1		USFS	103156	1	1	IC	Assigned	CA-VNC-103156		1		1	
USFS	103156	1	1	IC	Assigned	CA-VNC-103156		1		USFS	103156	1	1	IC	Assigned	CA-VNC-103156		1		USFS	103156	1	1	IC	Assigned	CA-VNC-103156		1		1	
USFS	103156	1	1	IC	Assigned	CA-VNC-103156		1		USFS	103156	1	1	IC	Assigned	CA-VNC-103156		1		USFS	103156	1	1	IC	Assigned	CA-VNC-103156		1		1	
USFS	103156	1	1	IC	Assigned	CA-VNC-103156		1		USFS	103156	1	1	IC	Assigned	CA-VNC-103156		1		USFS	103156	1	1	IC	Assigned	CA-VNC-103156		1		1	
USFS	103156	1	1	IC	Assigned	CA-VNC-103156		1		USFS	103156	1	1	IC	Assigned	CA-VNC-103156		1		USFS	103156	1	1	IC	Assigned	CA-VNC-103156		1		1	
USFS	103156	1	1	IC	Assigned	CA-VNC-103156		1		USFS	103156	1	1	IC	Assigned	CA-VNC-103156		1		USFS	103156	1	1	IC	Assigned	CA-VNC-103156		1		1	
USFS	103156	1	1	IC	Assigned	CA-VNC-103156		1		USFS	103156	1	1	IC	Assigned	CA-VNC-103156		1		USFS	103156	1	1	IC	Assigned	CA-VNC-103156		1		1	
USFS	103156	1	1	IC	Assigned	CA-VNC-103156		1		USFS	103156	1	1	IC	Assigned	CA-VNC-103156		1		USFS	103156	1	1	IC	Assigned	CA-VNC-103156		1		1	
USFS	103156	1	1	IC	Assigned	CA-VNC-103156		1		USFS	103156	1	1	IC	Assigned	CA-VNC-103156		1		USFS	103156	1	1	IC	Assigned	CA-VNC-103156		1		1	
USFS	103156	1	1	IC	Assigned	CA-VNC-103156		1		USFS	103156	1	1	IC	Assigned	CA-VNC-103156		1		USFS	103156	1	1	IC	Assigned	CA-VNC-103156		1		1	
USFS	103156	1	1	IC	Assigned	CA-VNC-103156		1		USFS	103156	1	1	IC	Assigned	CA-VNC-103156		1		USFS	103156	1	1	IC	Assigned	CA-VNC-103156		1		1	
USFS	103156	1	1	IC	Assigned	CA-VNC-103156		1		USFS	103156	1	1	IC	Assigned	CA-VNC-103156		1		USFS	103156	1	1	IC	Assigned	CA-VNC-103156		1		1	
USFS	103156	1	1	IC	Assigned	CA-VNC-103156		1		USFS	103156	1	1	IC	Assigned	CA-VNC-103156		1		USFS	103156	1	1	IC	Assigned	CA-VNC-103156		1		1	
USFS	103156	1	1	IC	Assigned	CA-VNC-103156		1		USFS	103156	1	1	IC	Assigned	CA-VNC-103156		1		USFS	103156	1	1	IC	Assigned	CA-VNC-103156		1		1	
USFS	103156	1	1	IC	Assigned	CA-VNC-103156		1		USFS	103156	1	1	IC	Assigned	CA-VNC-103156		1		USFS	103156	1	1	IC	Assigned	CA-VNC-103156		1		1	
USFS	103156	1	1	IC	Assigned	CA-VNC-103156		1		USFS	103156	1	1	IC	Assigned	CA-VNC-103156		1		USFS	103156	1	1	IC	Assigned	CA-VNC-103156		1		1	
USFS	103156	1	1	IC	Assigned	CA-VNC-103156		1		USFS	103156	1	1	IC	Assigned	CA-VNC-103156		1		USFS	103156	1	1	IC	Assigned	CA-VNC-103156		1		1	
USFS	103156	1	1	IC	Assigned	CA-VNC-103156		1		USFS	103156	1	1	IC	Assigned	CA-VNC-103156		1		USFS	103156	1	1	IC	Assigned	CA-VNC-103156		1		1	
USFS	103156	1	1	IC	Assigned	CA-VNC-103156		1		USFS	103156	1	1	IC	Assigned	CA-VNC-103156		1		USFS	103156	1	1	IC	Assigned	CA-VNC-103156		1		1	
USFS	103156	1	1	IC	Assigned	CA-VNC-103156																									

OPERATIONS

SITUATIONAL AWARENESS & INTEL

SCOUT



FMAG

California Governor's Office of Emergency Services (Cal OES) - Fire and Rescue Division
 FIRE MANAGEMENT ASSISTANCE (FMA) (FORM)

Agency Making Request: _____ Date / Time of Request: _____
 City / County: _____ Fire / Incident Name: _____ Inc. Number: _____
 Date/Time Fire Started: _____ IRR Type: _____
 Contact Name: _____ Phone Number: _____
 Address: _____
 Persons Involved - Name(s)/Title: _____
 Hazards: _____
 Fuel & Terrain Type: _____
 Name / Non-Made Name: _____
 Infrastructure/Public/Emergency Services Threatened/Other Critical Considerations: _____

Engine Commitment: _____
 Aircraft: _____
 Resources on Order: _____
 Wind Speed/Direction: _____
 Fire Behavior: _____



ROSS-REPORTS

A	B	C	D	E	F	G	H	I	J
01 CA-MTO-000071	2018 YSB JANUARY STORMS	0-70188	Rakestraw, Steven	CA-OESH	Jan 11, 2018 4:00:00 PM	CA-OES	California Office of Emergency Service	CA-OES	CDAA
02 CA-MTO-000071	2018 YSB JANUARY STORMS	0-70189	Xiong, Kou	CA-OESH	Jan 11, 2018 4:00:00 PM	CA-OES	California Office of Emergency Service	CA-OES	CDAA
03 CA-MTO-000071	2018 YSB JANUARY STORMS	0-71001	Bhur, Brad	CA-VSDC	Jan 11, 2018 7:55:00 PM	CA-ESC	Escondido Fire Department	CA-ESC	CDAA
04 CA-MTO-000071	2018 YSB JANUARY STORMS	0-71003	Martinez, Sergio	CA-VECC	Jan 11, 2018 1:30:00 PM	CA-NVE	Ventura County Operational Area	CA-NVE	CDAA
05 CA-MTO-000071	2018 YSB JANUARY STORMS	0-71018	Vernarecci, Dean	CA-MNYC	Jan 12, 2018 12:55:00 PM	CA-MNT	Monterey Fire Department	CA-MNY	CDAA
06 CA-MTO-000071	2018 YSB JANUARY STORMS	0-71019	Yost, Matt	CA-VSCC	Jan 12, 2018 6:30:00 PM	CA-OIT	Santa Clara County Fire Department	CA-VSC	CDAA
07 CA-MTO-000071	2018 YSB JANUARY STORMS	0-71020	Granger, Luke R	CA-VBOC	Jan 12, 2018 12:00:00 AM	CA-COL	Colton Fire Department	CA-VBO	CDAA
08 CA-MTO-000071	2018 YSB JANUARY STORMS	0-71021	DUNNICK, ERIC	CA-VSDC	Jan 12, 2018 8:00:00 AM	CA-SID	San Diego City Fire Department	CA-VSDC	CDAA
09 CA-MTO-000071	2018 YSB JANUARY STORMS	0-71039	Carion, Brenda	CA-VORC	Jan 12, 2018 7:00:00 AM	CA-ANA	Anaheim Fire Department	CA-VOR	CDAA
10 CA-MTO-000071	2018 YSB JANUARY STORMS	0-71048	Fisher, Wade Edward	CA-VORC	Jan 11, 2018 11:00:00 PM	CA-RUL	Fullerton Fire Department	CA-FUL	CDAA
11 CA-MTO-000071	2018 YSB JANUARY STORMS	0-71053	Topoleski, Jim	CA-VBOC	Jan 12, 2018 12:00:00 PM	CA-RED	Redlands Fire Department	CA-VBO	CDAA
12 CA-MTO-000071	2018 YSB JANUARY STORMS	0-71056	SINAVEY, STEVEN E	CA-VSDC	Jan 12, 2018 7:00:00 AM	CA-ELC	El Cajon Fire Department	CA-ELC	CDAA
13 CA-MTO-000071	2018 YSB JANUARY STORMS	0-71057	CANAVAN, JON MICHAEL	CA-VSDC	Jan 12, 2018 6:00:00 AM	CA-POW	Poway Fire Department	CA-VSDC	CDAA
14 CA-MTO-000071	2018 YSB JANUARY STORMS	0-71058	LAURENCE, PETE	CA-VSDC	Jan 12, 2018 8:00:00 PM	CA-OCS	Oceanside Fire Department	CA-OCS	CDAA
15 CA-MTO-000071	2018 YSB JANUARY STORMS	0-71062	Glass, Brian	CA-VSDC	Jan 12, 2018 12:00:00 PM	CA-OIT	Santa Clara County Fire Department	CA-VSDC	CDAA
16 CA-MTO-000071	2018 YSB JANUARY STORMS	0-71091	Arthur, Janet	CA-SLCC	Jan 13, 2018 8:00:00 AM	CA-SLC	San Luis Obispo County Fire Departm	CA-VSL	CDAA
17 CA-MTO-000071	2018 YSB JANUARY STORMS	0-71099	EAGAN, RICHARD ANTHONY	CA-VSDC		CA-CHV	Chula Vista Fire Department	CA-VSDC	CDAA
18 CA-MTO-000071	2018 YSB JANUARY STORMS	0-718	Negrete, Anthony	CA-VLCC	Jan 11, 2018 12:00:00 PM	CA-SGB	San Gabriel Fire Department	CA-SGB	CDAA
19 CA-MTO-000071	2018 YSB JANUARY STORMS	0-8	Taylor, Kevin	CA-VSBC	Jan 8, 2018 12:00:00 PM	CA-MTO	Montecito Fire Protection Department	CA-MTO	CDAA
20 CA-MTO-000071	2018 YSB JANUARY STORMS	0-81	Hosse, Michael F	CA-VSBC	Jan 9, 2018 8:05:00 AM	CA-STB	Santa Barbara City Fire Department	CA-STB	CDAA
21 CA-MTO-000071	2018 YSB JANUARY STORMS	0-82	TAN, FREDERICK Y	CA-SBDC	Jan 9, 2018 8:05:00 AM	CA-SBC	Santa Barbara County Fire Departm	CA-SBC	CDAA
22 CA-MTO-000071	2018 YSB JANUARY STORMS	0-83	Crakes, Thomas	CA-VSBC	Jan 9, 2018 6:05:00 AM	CA-SMR	Santa Maria Fire Department	CA-SMR	CDAA
23 CA-MTO-000071	2018 YSB JANUARY STORMS	0-84	Anderson, Amber Nicole	CA-VSBC	Jan 8, 2018 12:00:00 PM	CA-STB	Santa Barbara City Fire Department	CA-STB	CDAA
24 CA-MTO-000071	2018 YSB JANUARY STORMS	0-85	Russell, Robert	CA-VLBC	Jan 10, 2018 6:00:00 PM	CA-LIN	La Verne Fire Department	CA-LIN	CDAA
25 CA-MTO-000071	2018 YSB JANUARY STORMS	0-86	YSEBRAIDS, PETER	CA-SBDC	Jan 10, 2018 7:05:00 AM	CA-SBC	Santa Barbara County Fire Departm	CA-SBC	CDAA
26 CA-MTO-000071	2018 YSB JANUARY STORMS	0-87	TREDD, JOHN J	CA-SBDC	Jan 10, 2018 7:05:00 AM	CA-SBC	Santa Barbara County Fire Departm	CA-SBC	CDAA



FIRESCOPE

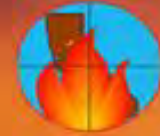


Firefighting **RES**ources of California Organized for Potential Emergencies





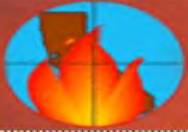
FIRESCOPE



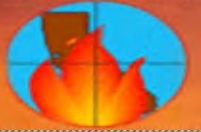
FIRESCOPE

- 1970 September Southern California Wildfires
- Primary California Fire Service decision process program
- All Hazards





FIRESCOPE



Vision Statement

FIRESCOPE's vision is to continue national leadership in the development of all-hazard incident management and multi-agency coordination systems, to enhance and encourage full participation by the California Fire Service in the statewide Fire and Rescue Mutual Aid System, and to provide a common voice for the California Fire Service.



SPECIAL OPERATIONS



SPECIAL OPERATIONS

The California Governor's Office of Emergency Services (Cal OES) is responsible for the overall management and coordination of the state and federal US&R Response System, which includes eight multi-disciplinary Urban Search & Rescue Task Forces, twelve Regional Task Forces, eighteen Type II mobile rescue caches, thirteen Swift Water/Flood Water Rescue Teams in California, and twelve Type 2 Haz-Mat Response vehicles.

- [Urban Search & Rescue \(US&R\) Task Forces](#)
- [US&R Companies](#)
- [Cal OES Type II US&R Cache Trailer Program](#)
- [Cal OES Swifwater-Flood Search & Rescue Teams](#)
- [Hazardous Materials](#)

URBAN SEARCH & RESCUE

- State/National Urban Search and Rescue (US&R) Task Force
- California Regional US&R Task Forces
- US&R Companies and other Resources
- Type II Rescue Cache Trailer Program



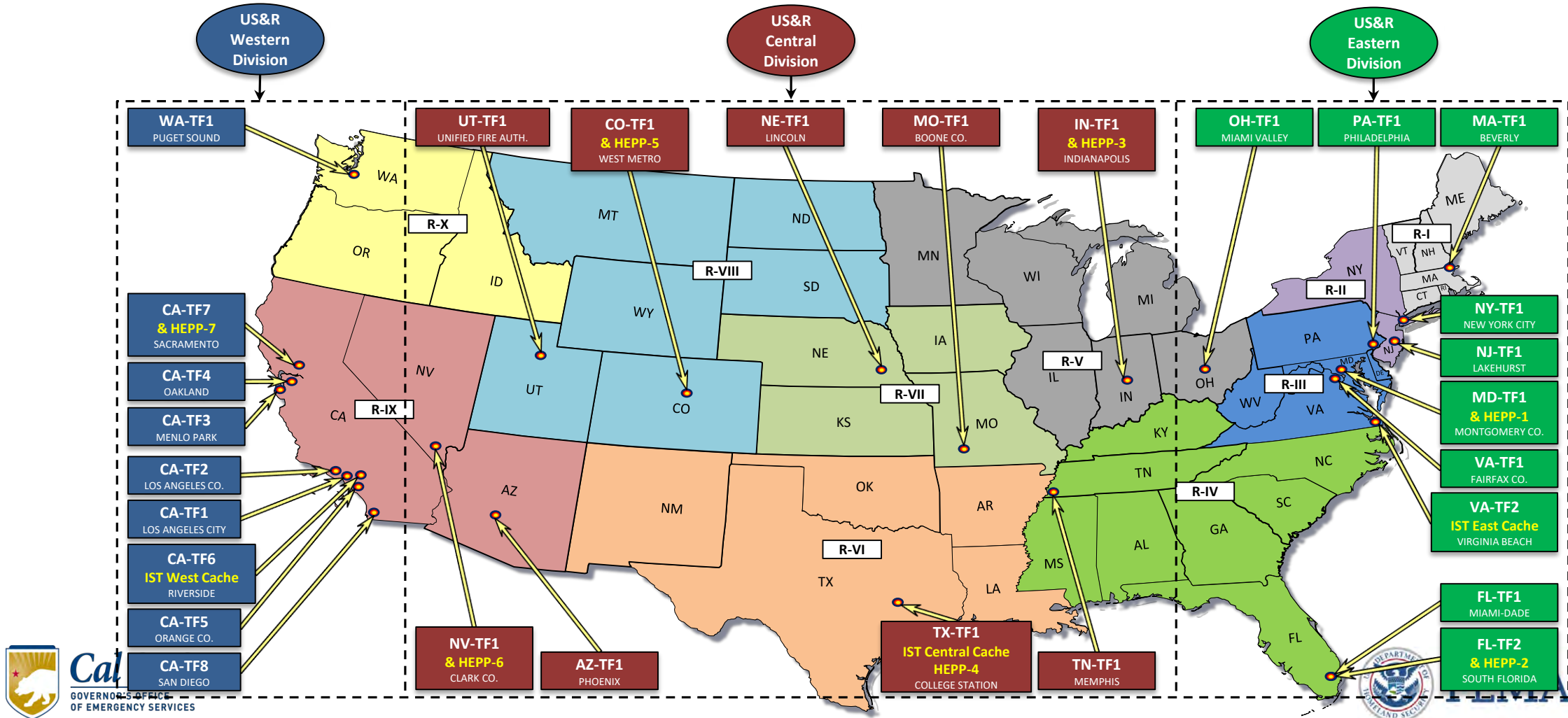
304 Typed US&R Resources in California Fire & Rescue Mutual Aid System (ESF-4)

California Mutual Aid Region	US&R State & National Task Forces	US&R Regional Task Forces	US&R ICS Type 1	US&R ICS Type 2	US&R ICS Type 3	OES US&R ICS Type 3	US&R ICS Type 4	US&R ICS Type 2 OES Trailers
R-I	3	8	33	14	13	21		2
R-II	2	1	11	6	10	26		5
R-III				1		13		1
R-IV	1		5	4	6	19		5
R-V		2	3	2	6	13		2
R-VI	2	1	13	5	19	22		4
Totals	8	12	65	32	54	114		19
Statewide US&R Companies/TF's				304				

National US&R Response System

28 State/National US&R Task Force Locations (8 Based in California Fire Departments)

Note: IST = Incident Support Team Equipment Cache
HEPP = US&R Hazardous Material Push Package



HAZARDOUS MATERIALS

The Hazardous Materials (HazMat) section, under Cal OES Fire and Rescue Division, coordinates statewide implementation of hazardous materials accident prevention and emergency response programs for all types of hazardous materials incidents and threats. In response to any hazardous materials emergency, the Section staff is called upon to provide state and local emergency managers with emergency coordination and technical assistance. Programs within the HazMat Section include:

[Area Plans](#)

[Business Plan/EPCRA 312](#)

[California Accidental Release Prevention \(CalARP\)](#)

[Cal OES HazMat Type II Program](#)

[Hazardous Material Commodity Flow Map](#)

[HazMat by Rail](#)

[HazMat Emergency Preparedness Grant \(HMEP\)](#)

[HazMat Section Publications](#)

[HazMat Team Typing \(HMTT\)](#)

[Local Emergency Planning Committee](#)

[Public Records Requests](#)

[Spill Release Reporting](#)

[State Emergency Response Commission](#)

[Unified Program](#)

[Interagency Refinery Task Force](#)

HAZARDOUS MATERIALS

- Type II Haz-Mat Response Vehicles



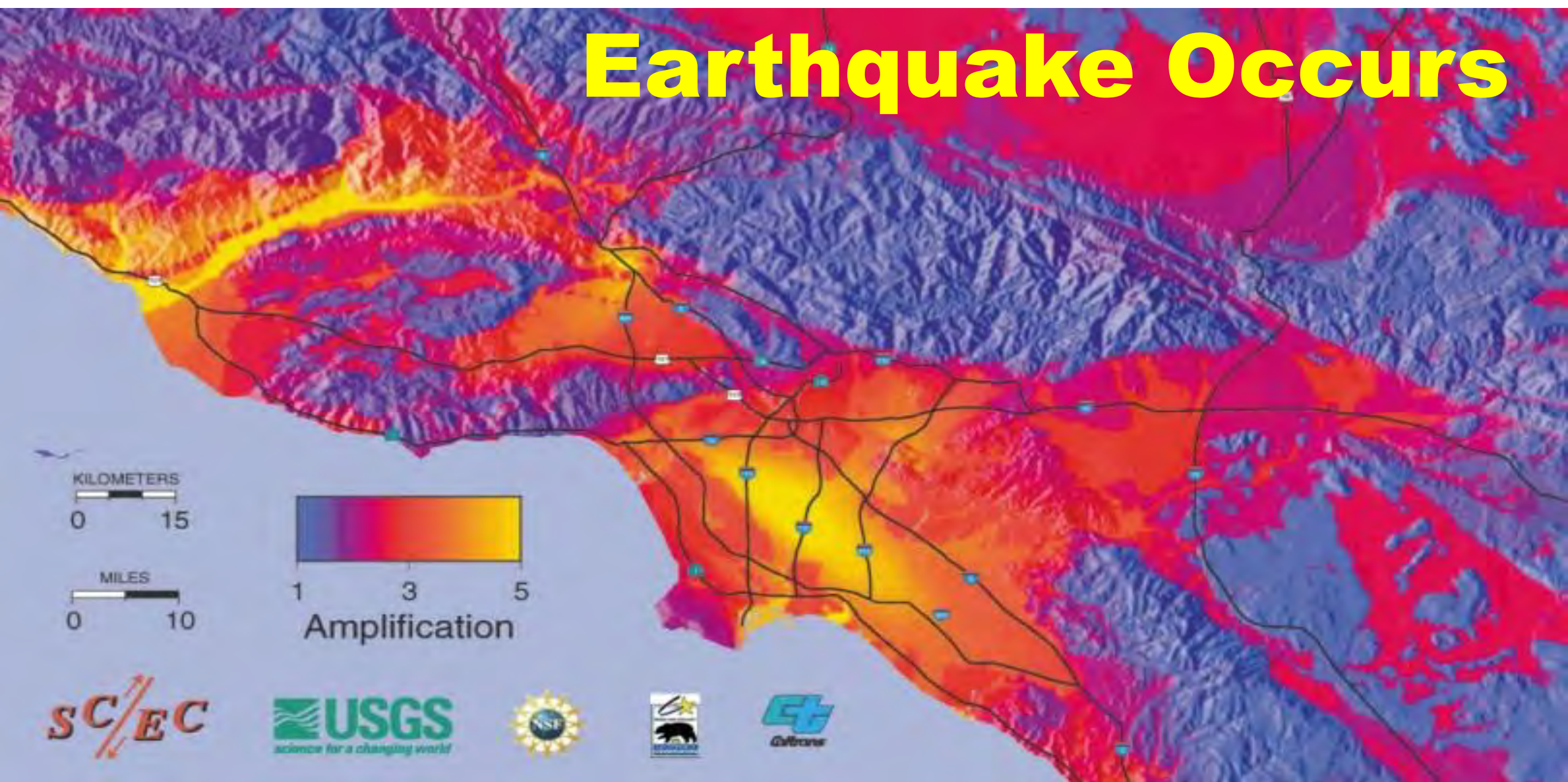
73 Typed California Haz Mat Teams To Assist In Mass SAR Operations (Confined Space Rescue & Haz Mat Releases Impacting Search & Rescue)

CERTIFIED CALIFORNIA HAZ-MAT TEAMS, BY TYPE										(Items highlighted is new data since last		- AS OF 12-5-	
Request	Insp.	Pass	AGENCY	Operational	Region	Unit	Attained	Zip					
46	41	28	Anaheim Fire	XOR-ANA	I	HM -8	01/13/17	92807					
14	13	32	Burbank City Fire	XLC-BRK	I	HM -12	06/08/17	91605					
10	10	9	Glendale City Fire	XLC-GLN	I	HM -24	06/08/17	91208					
7	7	5	Long Beach Fire Dept.	XLF-LOB	I	HM -24	10/06/16	90802					
18	17	30	Los Angeles County Fire	XLB-LAC	I	HM -150	12/27/10	91351					
51	46	37	Orange Co Fire Authority	XOR-ORC	I	HM -4	08/15/17	92612					
49	44	26	Orange Co Fire Auth. (formerly Santa Ana hm-9)	XOR-ORC	1	HM -79	08/15/17	92705					
55	58	47	Santa Fe Springs Fire	XLE-SFS	I	HM # 851	09/12/10	90670					
54	48	8	Santa Monica Fire	XLA-SMA	I	HM -4	10/27/16	90404					
26	25	15	Vernon City Fire	XLE-VER	I	HM -77	07/15/17	90058					
45	40	23	Ventura County Fire	XVE-VNC	I	HM -50	05/03/17	93010					
6	6	11	Alameda County Fire	XAL-ACF	II	HM -12	05/16/17	94546					
5	5	7up	Contra Costa County JPA	XCC-CCH	II	HM -1	10/20/16	94553					
			Presidio of Monterey			HM -61	09/20/17						
33	31	Sup	Marin County Fire Haz-Mat JPA	XMR-MRN	II	HM -1	08/02/16	94960					
43	62	52	Oakland City Fire	XAL-OKL	II	HM #	08/23/13	94607					
22	45	31	San Jose City Fire	XSC-SJS	II	HIT-29	04/05/17	95134					
24	23	19	Santa Clara County Fire	XSC-CNT	II	HM -72	03/14/17	95014					
50	39	35	Solano County O.E.S. (Fairfield City FD)	XSO-FRF	II	HM -1	7/18/17	94533					
1	1	1	Roseville City Fire	XPL-RSV	IV	HM -1	05/17/16	95678					
2	2	2	Sacramento City Fire	XSA-SCR	IV	HM RT-7	12/01/16	95823					
3	3	3	Sacramento City Fire	XSA-SCR	IV	HM RT-30	12/01/16	95835					
4	4	4	Sacramento Metro F.P.D.	XSA-SAC	IV	HM -109	07/13/06	95608					
42	36	25up	Bakersfield Fire Dept	XKE-BKF	V	HM -15	03/16/17	93314					
27	26	13	Clovis City Fire	XFR-CLV	V	HM -40	12/21/17	93611					
17	16	12	Fresno City Fire	XFR-FRN	V	HM -1	04/08/11	93703					
16	15	6	Fresno City Fire	XFR-FRN	V	HM -16	11/20/07	93722					
11	61	14up	Merced County F.D.	XM D-MRD	V	HM -62	03/13/13	95301					
32	30	41	Visalia Fire	XTU-VSA	V	HM -55	05/24/17	93291					
67	73	62	Ontario City Fire	XBO-OTO	VI	HM -133	08/07/15	91764					
57	55	44u	Riverside City Fire	XRI-RIV	VI	HM -2	07/04/14	92503					
68	66	55	San Bernardino County Fire	XBO-BDC	VI	HM -74	07/04/14	92337					
9	69	56	San Diego City Fire	XSD-SND	VI	HM -1	05/30/14	92126					
48	70	57	San Diego City Fire	XSD-SND	VI	HM -2	05/30/14	92126					
71	72	61	San Manual Band of Mission Indians Fire Dept.	XBO-SMI	VI	HM -241	4/25/17	92346					
15	14	7	U.S. Marine Corp Camp Pendleton	XSD-MCP	VI	HazMat at 1	03/13/08	92055					
TYPE 1 TOTAL:							35						
72	74	63	CalFire/SanLuis Obispo County Fire	XSL-SLU	I	HM-1	1/13/16	93446					
66	65	53	Santa Barbara County	XSB-SBC	I	HM -31	7/13/10	93427					
59	67	59	Santa Barbara City	XSB-STB	I	HM -1	11/3/14	93101					
63	67	59	Belmont City Fire	XSM-BEL	II	HM -14	3/7/14	94002					
31	5	8	Humboldt Bay Fire Dept	XHU-EUR	II	HM -8190	4/21/10	95501					
41	29	22	Fremont City Fire	XAL-FRE	II	HM -57	4/4/11	94538					
20	49	36	Mt. View Fire	XSC-MTV	II	HM -55	3/8/17	94043					
53	35	33	Livermore-Pleasanton	XAL-LAP	II	HM -92	10/16/12	94588					
28	31	17	San Ramon Fire Prot. Dist	XCC-SRM	II	HM -35	6/19/09	94506					
8	27	16	Sonoma County Fire	XSN-SSR	II	HM -2936	3/7/17	95403					
25	8	18	Sunnyvale Dept. Public Safety	XSC-SNY	II	R-42	11/30/16	94085					
35	24	24	Napa County Fire	XNA-NPA	II	HM -27	10/26/10	94558					
61	32	29	Salinas City Fire - Monterey County JPA	XM Y-SLS	II	HM -2	4/22/13	93901					
44	60	50	San Francisco Fire	XSF-SFR	II	HM -1	5/4/11	94102					
23	45	38	Santa Clara City Fire	XSC-SNC	II	HM -9	6/19/12	95051					
36	52	45	Butte County Fire	XBU-BUT	III	HM -5	1/4/10	95928					
69	68	60	Placer Co. Fire (CDF)	XPL-PCF	III	HM -10	2/1/15	95959					
12	54	42	Shasta-Cascade HM JPA (Redding Fire)	XSH-SHS	III	HM -24	2/17/12	96002					
13	12	10	Truckee Fire Prot. District	XTB-TRK	IV	HM -1	6/8/10	96161					
47	42	40	Kern County Fire	XKE-KRN	V	HM -66	3/16/17	93308					
60	59	49up	Corona City Fire	XRI-COR	VI	HM -4	5/4/13	92879					
56	57	43up	Hemet City Fire	XRI-HMT	VI	HM -1	5/6/12	92545					
64	63	51	Riverside County Fire	XRI-RRU	VI	HM -34	5/14/13	92596					
TYPE 2 TOTAL:							23						
21	20	27	Palo Alto Fire Dept.	XSC-PAF	II	Rescue 2	2/8/10	94304					
58	56	46	Santa Rosa City Fire	XSN-SRS	II	HM -1	2/7/12	95404					
TYPE 3 TOTAL:							2						
TOTAL							61						
THIS													
http://www													
NOTES: CII													

- Additional and New:
Cal OES Type II Ha Mat Response Vehicles/Type II Haz Mat Teams
 Contra Costa County FPD (Haz Mat 22)
 Modesto FD (Haz Mat 41)
 Susanville FD (Haz Mat 32)
 Yuba City FD (Haz Mat 31)
 South Co Fire Auth/Tracy FD (Haz Mat 42)
 Fresno City FD (Haz Mat 52)
 Kern County FD (Haz Mat 51)
 Salinas & Seaside FDs (Haz Mat 21)
 San Bernardino County FD (Haz Mat 62)
 San Diego City FD (Haz Mat 61)
 Los Angeles City FD (Haz Mat 12)
 Los Angeles County FD (Haz Mat 11)



Earthquake Occurs



In addition to thousands of structure collapses and other consequences, the “Shakeout Earthquake Scenario” Illustrates the Potential for **Massive Urban Conflagrations after a Magnitude 7.8 Quake.**

“Fire Following Quake” Will Be One of Our Greatest Challenges



**After a 7.8 Quake San Andreas Quake
Will Cause 1,600 Ignitions Requiring
Fire Dept. Response In Urban So. Cal...**





**About
1,200 Urban Fires Cannot
Be Controlled By The First-
Arriving Engine**

Damaged Water Supply Systems Will Hinder Firefighting Efforts



Dozens of Urban Conflagrations Will Develop, Each Burning Tens of Blocks



Kobe, Japan, 1995

An aerial photograph showing a massive, intense fire in an urban area. The fire is a large, bright orange and yellow mass that has spread across a significant portion of the city. The surrounding buildings and streets are visible, but many are obscured by the fire. The fire appears to be a large-scale conflagration, with thick smoke rising from the burning area.

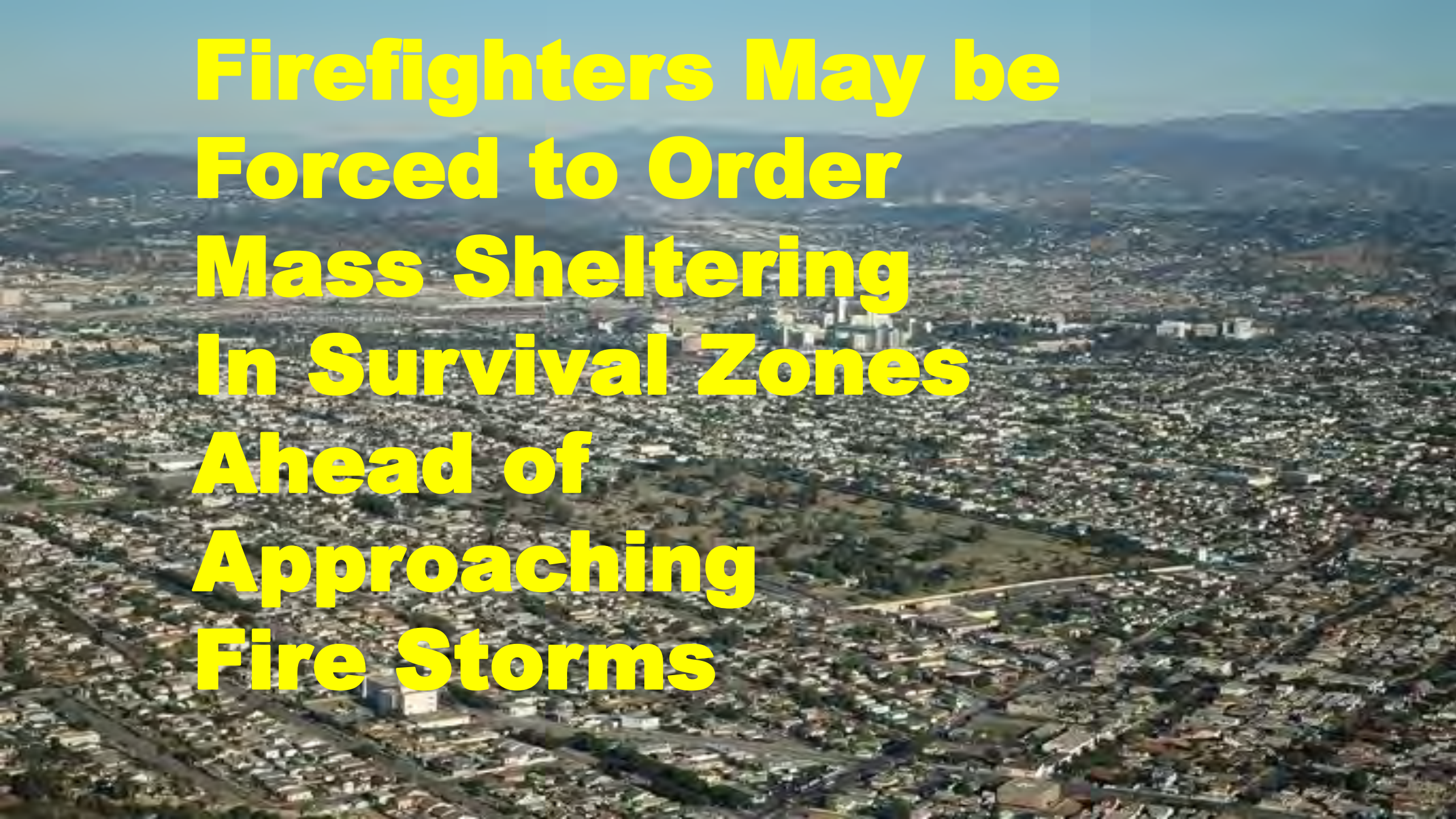
**Some Urban Conflagrations Will
Merge as “Super Conflagrations”**

Many Will be Trapped Alive Inside Buildings Exposed to Fire

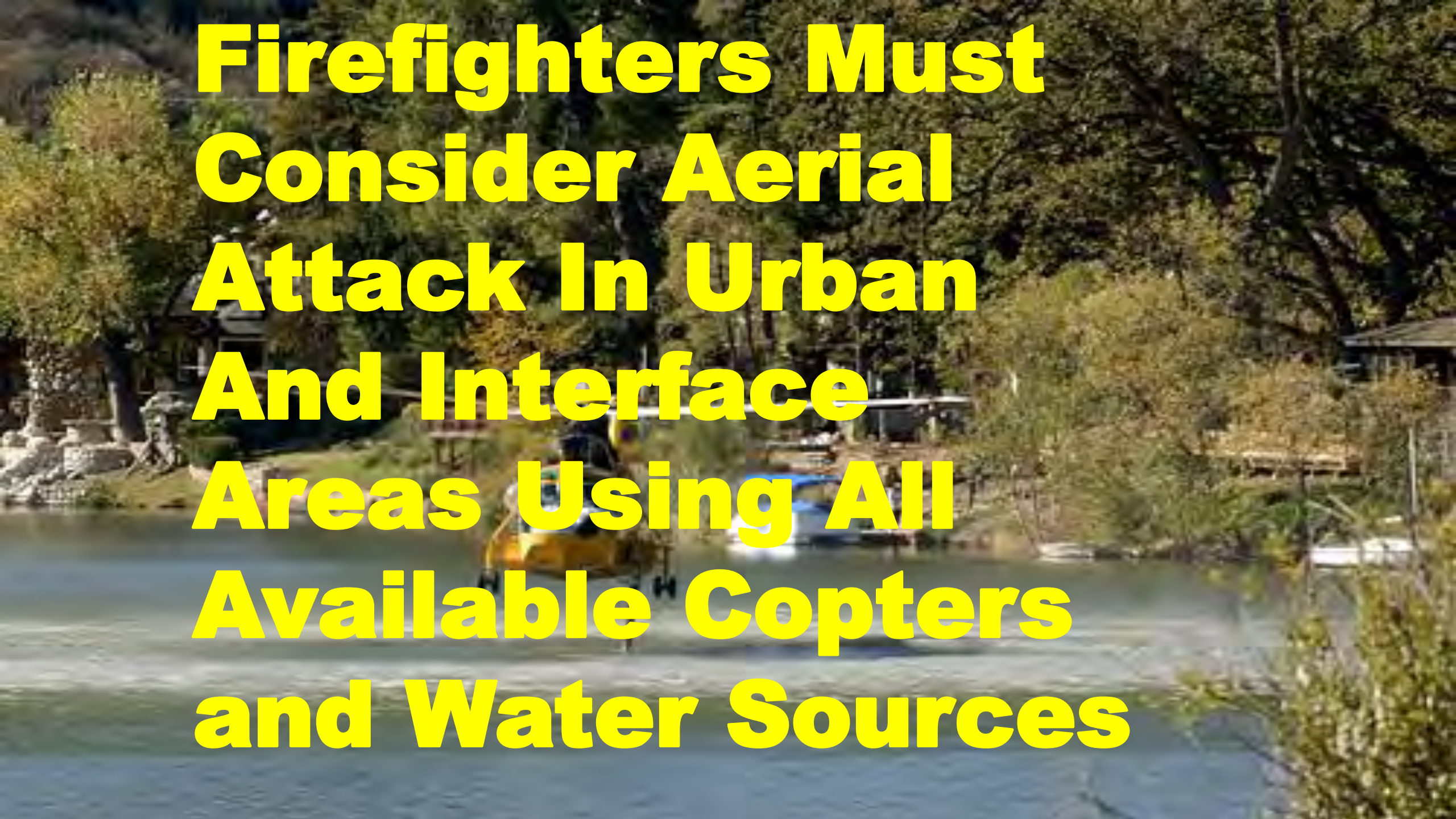




**Paths of
Escape May
Be Cut Off**

An aerial photograph of a densely populated city, likely Los Angeles, with a clear view of the city grid and surrounding mountains under a blue sky. The text is overlaid on the left side of the image.


**Firefighters May be
Forced to Order
Mass Sheltering
In Survival Zones
Ahead of
Approaching
Fire Storms**

A yellow helicopter is positioned on a calm lake. In the background, a house is partially visible through a dense line of green trees. The scene is brightly lit, suggesting a sunny day.

**Firefighters Must
Consider Aerial
Attack In Urban
And Interface
Areas Using All
Available Copters
and Water Sources**

**They Will
Have to
Consider
Unprecedented
Use Of Fixed-
Wing Aerial
Attack in
Urban Areas
To Limit
Conflagrations**



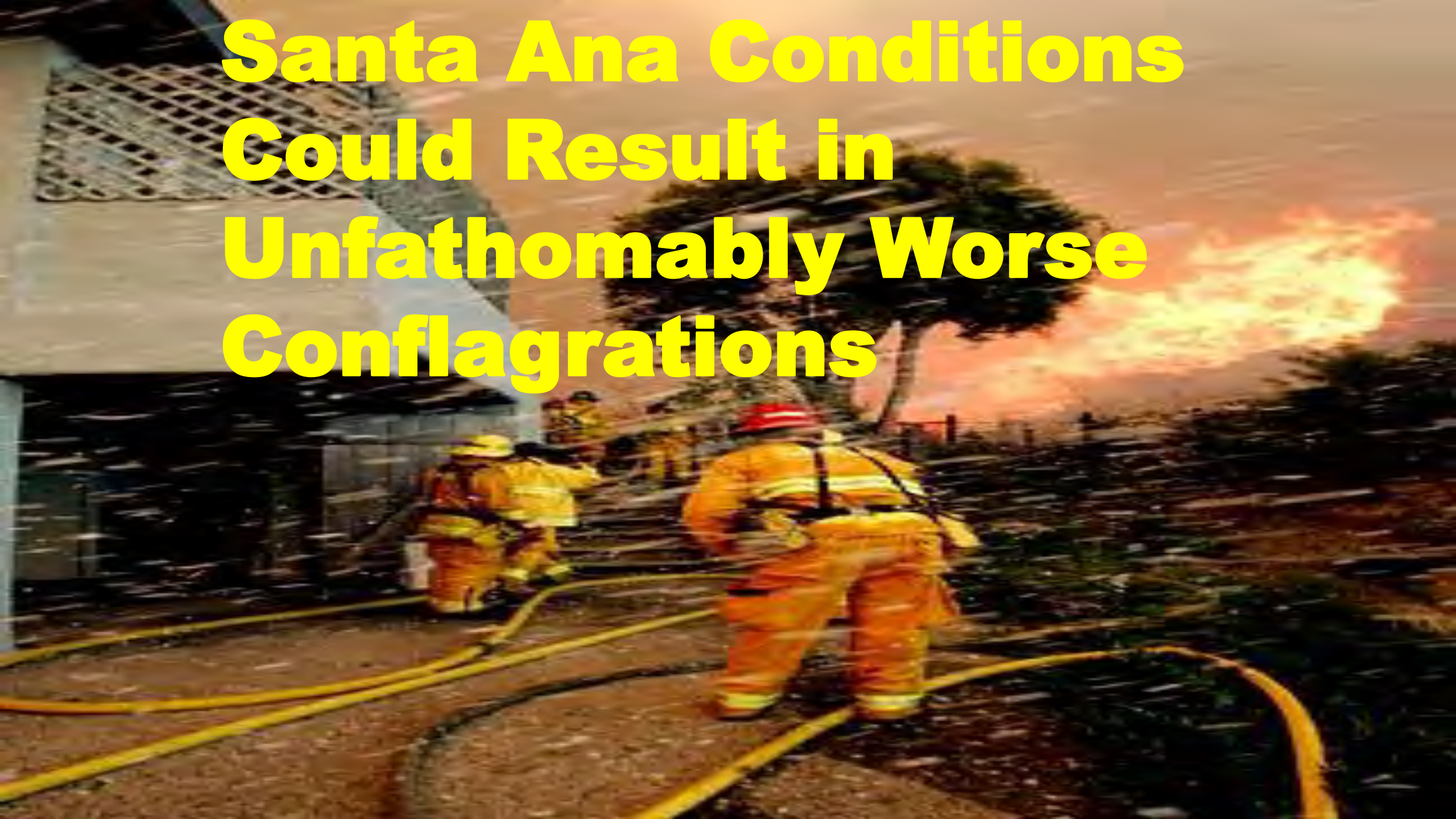
An aerial, black and white photograph of a city. A complex multi-level highway interchange is visible in the center-right. The surrounding area is densely packed with buildings, streets, and greenery. The text is overlaid on the left side of the image.

**They Will Have to
Consider The Use
Of Natural &
Manmade
Fire Breaks
In Urban Areas**

An aerial photograph showing a residential area during a wildfire. In the foreground, a large, bright fire is burning, with thick smoke rising from it. The background shows a neighborhood with houses and streets, some of which are partially obscured by smoke and ash. The overall scene is one of destruction and chaos.

**133,000 Structures
Burn to the Ground
WITHOUT SANTA
ANA WINDS!**

Santa Ana Conditions Could Result in Unfathomably Worse Conflagrations



Earthquake Incidents

Standard Operating Procedures for the First Responder

Earthquake occurs!

What are your initial actions?



Strategic Priorities

All decision making and action plans are based on these strategic priorities

- **Protecting life**
- **Protecting property**
- **Protecting the environment**
- **Assisting other agencies**

Tactical Priorities

- 1. Life threatening incidents (ie. rescues, persons trapped, collapsed buildings, structure fires, preventing conflagrations, etc.)**
- 2. Potential life threatening incidents (ie. gas leaks inside, elevator rescues, etc.)**
 - Non-life threatening incidents (ie. flooding, public assists, fire alarms, gas leaks outside etc.)**

Personnel Safety

During an earthquake, all personnel shall **DROP, COVER, AND HOLD ON**



ROBERT A. CINADER
MEMORIAL FIRE STATION
LOS ANGELES COUNTY FIRE DEPARTMENT
CITY OF CARSON
FIRE STATION 127

**Exception: In apparatus room or near apparatus,
Immediately evacuate away from rigs, which
may be bouncing around during earthquakes**



Personnel Safety

After the Shaking has stopped:

Report to the Personnel Reporting Area as designated in the Building Evacuation Plan, as soon as it is safe to do so. Be ready for many aftershocks



***We need to first
determine probability of
earthquake damage.***

***How do we
“gwestimate” this?***



Departmental Earthquake Intensity Rating

Intensity Rating

Level 0 = Nothing felt

Level 1 = Earthquake felt, NO damage

Level 2 = Items on shelves; windows broken

Level 3 = Block walls down

Level 4 = Structure off foundations

Level 5 = Structural collapse

Company Status / Site Survey

- **Move apparatus to a safe location.**



Company Status / Site Survey

- **Ensure safety of all personnel (PAR).**



Company Status / Site Survey

- Don Safety Gear and Conduct Site Survey



Company Status / Site Survey

- **Determine the status of the site/facility utilities and mitigate fuel leaks, gas leaks, or other critical issues.**



Primary Jurisdictional Survey

- **Jurisdictional Survey shall be completed by companies when:**
- **Any administrative site in their battalion has experienced an earthquake with an Earthquake Intensity Rating of Level 2 or greater.**
- **Directed by the jurisdictional Battalion Chief or FCCF.**

Primary Jurisdictional Survey

- Jurisdictional Survey conducted **Code R** and completed in **less than 30 min.** Survey findings reported to Battalion Chief.



Primary Jurisdictional Survey

- **Jurisdictional Survey shall include the following information:**
- **Fires and Incipient Conflagrations Requiring Immediate Action**
- **Status of high life hazard occupancies only (ie. hospitals, high rises, significant hazardous materials buildings).**
- **Schools, convalescent homes and other such occupancies.**

Primary Jurisdictional Survey

- ***A Primary Jurisdictional Survey shall only be interrupted to interevene in an immediate life threatening situation.***



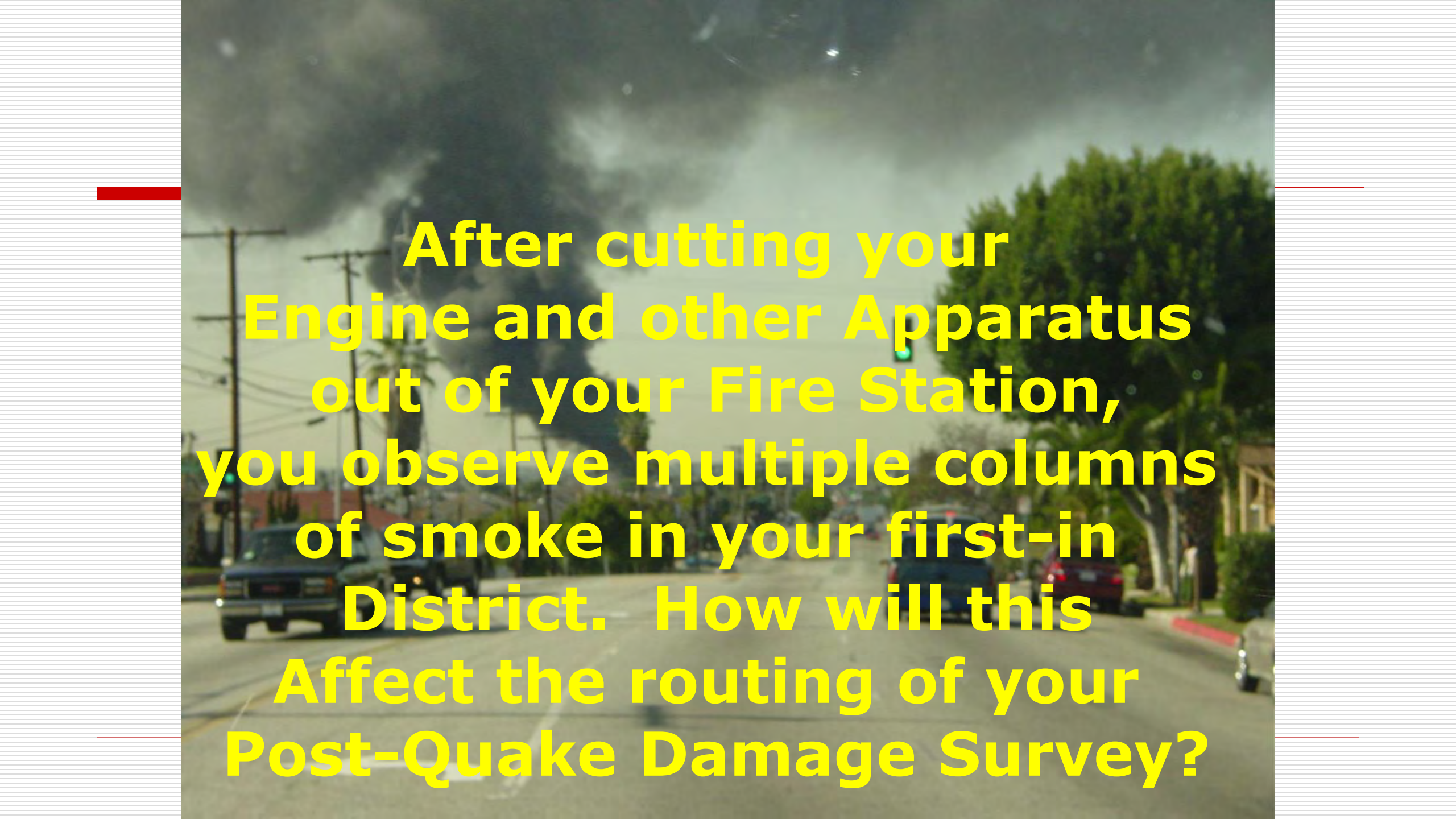
FIRE STATION

**Your Fire Station Has Been
Seriously Damaged**

**Apparatus Doors Are
Inoperable from
Structural Damage**

How Will You Respond?





After cutting your Engine and other Apparatus out of your Fire Station, you observe multiple columns of smoke in your first-in District. How will this Affect the routing of your Post-Quake Damage Survey?

**--Right away, you come across this fire,
and you know there are many more like it**



Hydrants are Dry Because of Water Main Damage



**“Water to Firefighters, is like
Bullets to cops”**

-Fire Chief (Retired) Don Manning, LAFD

All You Have Is the Water In Your Engine's Tank

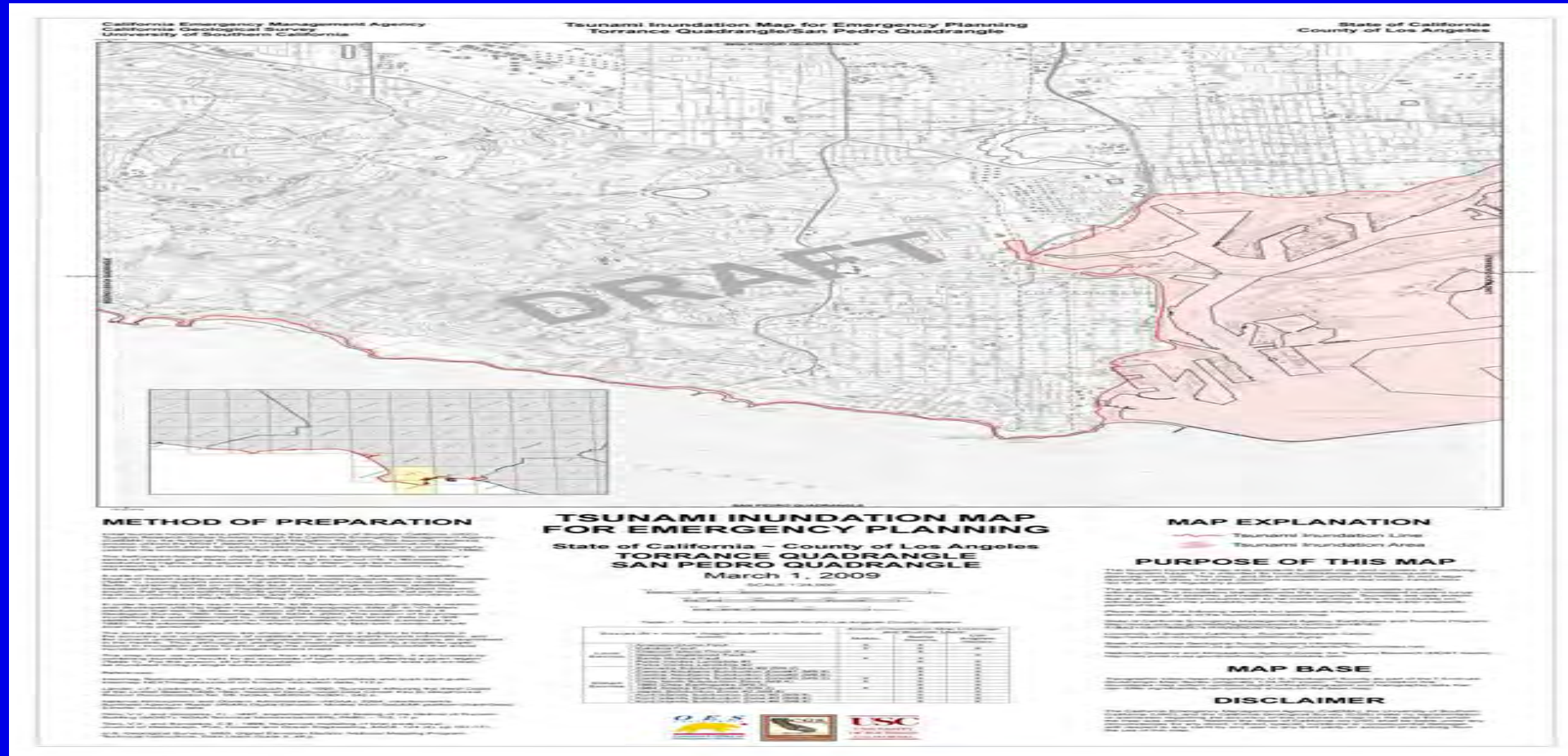


What are your options? Where will you engage?

Do You Know Where to Find Firefighting Water Now?



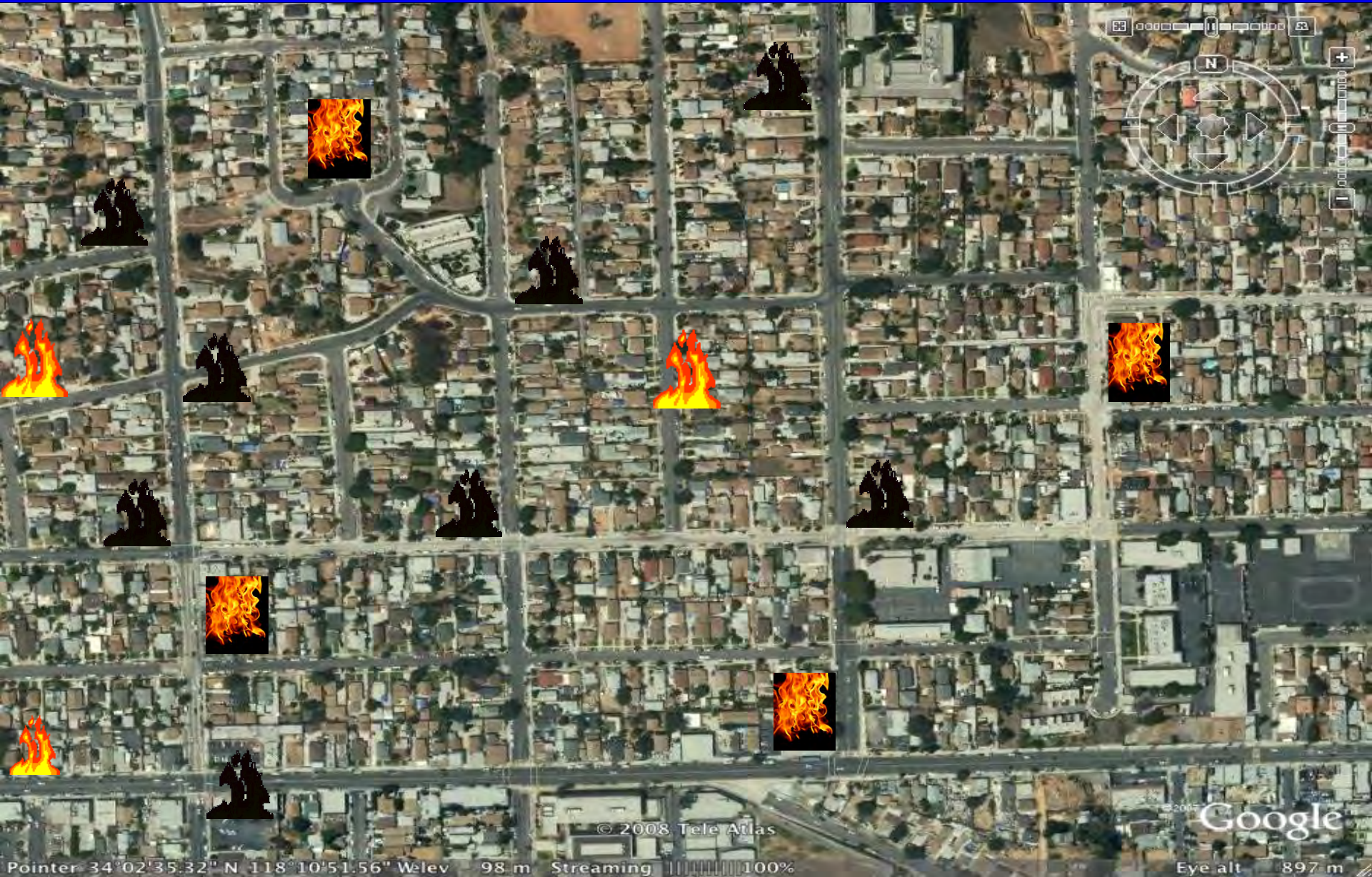
Do You Know Where to Find Tsunami Inundation Maps?



http://lacoa.org/PDF/tsunami_la_final_a.pdf

http://www.conservation.ca.gov/cgs/geologic_hazards/Tsunami/Inundation_Maps/LosAngeles/Pages/LosAngeles.aspx

Meanwhile, this is happening in your Fire Station's first-in district. What is your plan?



**Even Without Santa Anas,
Conflagrations Are Expanding
in Multiple Locations.**



What is your Strategy now?



**Are You Prepared to
Conduct Relay Operations to
Bypass Damaged Water Mains?
(Review V5-C4-S1, Page 16)**

**Will an Eductor be Helpful
Here If Water Mains are
Damaged and Hydrants Dry?**





Discuss Other Strategy and Tactics You May Employ Under These Conditions

**As You Continue the Jurisdictional
Damage Survey, You Encounter Several
Large Building Collapses.**



Collapse Rescue Consideration #1:



Risk versus. Gain

**Collapse Rescue
Consideration #2
Never Give Up
(Survivors May Be
Rescued Up To 16
Days After Collapse)**



You See Civilians Attempting To Rescue Victims from Collapses Using Hand Tools



--What Directions Can You Give Them NOW ?

**--Can You Organize Civilians to Help
Conduct Effective Search/Rescue
Work Until More Help Arrives?**

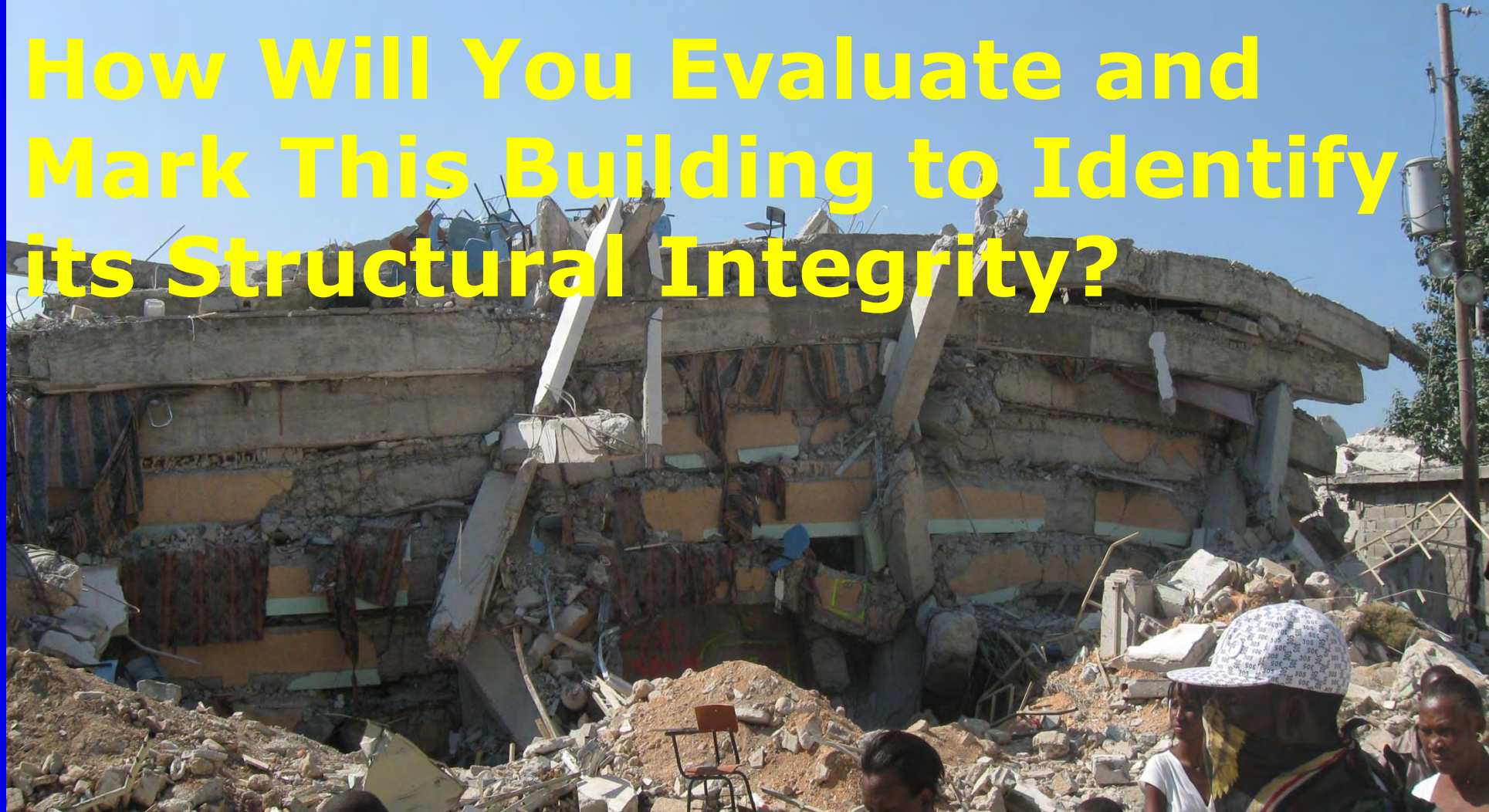
**--Can the local CERT provide
assistance?**

--Where can more tools be found?



This is One of Several Large Collapses In Your District.

How Will You Evaluate and Mark This Building to Identify its Structural Integrity?



**How Will You Begin Search
& Rescue Ops Here? Do
You Know the 5 Stages of
Collapse SAR Ops?**



Basic Search for First Responders

Deployment of personnel for physical search

Advantages

- **Resources readily available**
- **No high tech equipment/procedures needed**
- **Can use volunteers**
- **Visual sighting provides victim location verification**



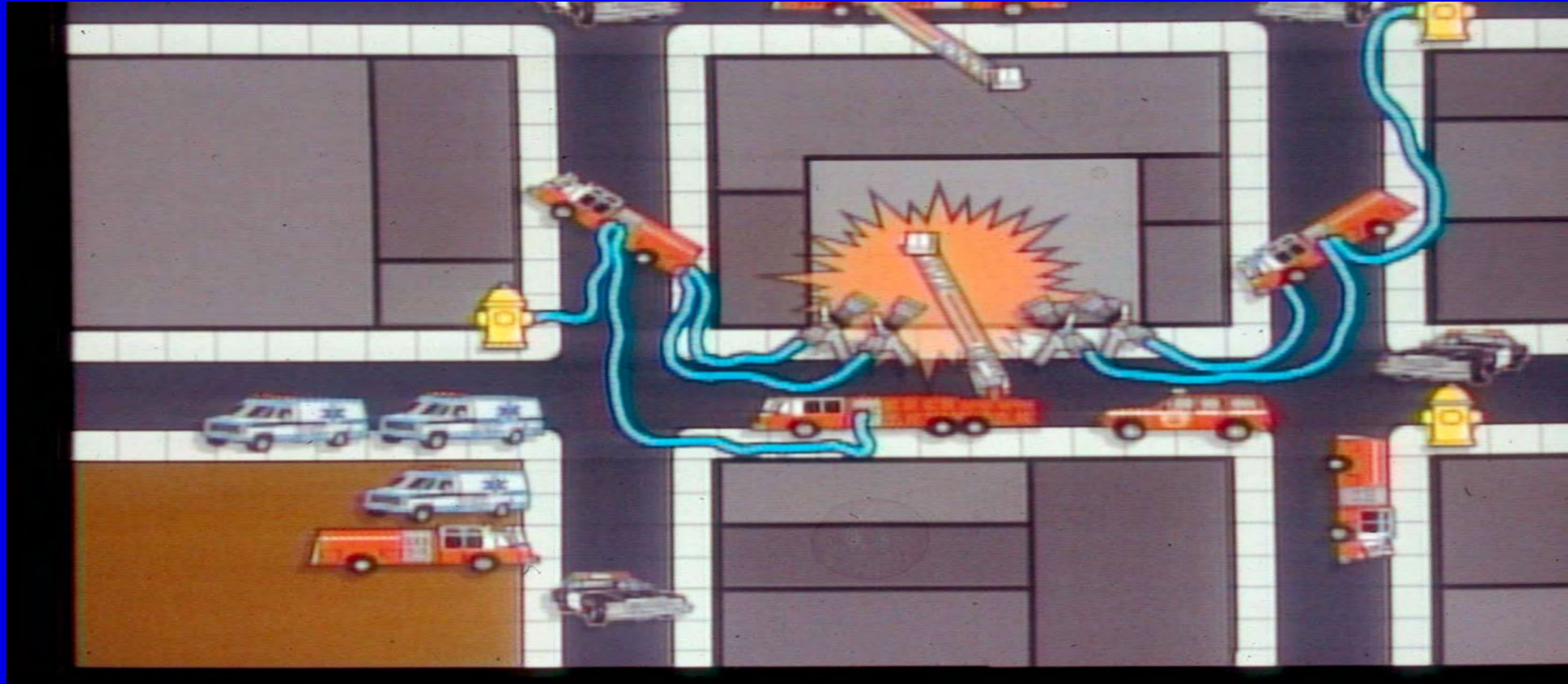
5 Stages of Collapse SAR Ops (A Worldwide Standard!)

- **Stage 1: Response/Arrival/Recon**
- **Stage 2: Surface Rescue**
- **Stage 3: Void Space Search & Rescue**
- **Stage 4: Selected Debris Removal**
- **Stage 5: General Debris Removal**

Stage 1: Response, Arrival, and Recon



This is Typical Apparatus Placement at a Collapse (Courtesy FDNY)



**The Big Difference After a 7.8 Earthquake:
For the first few hours, the only unit may be
a single Engine or Truck Company or Squad**

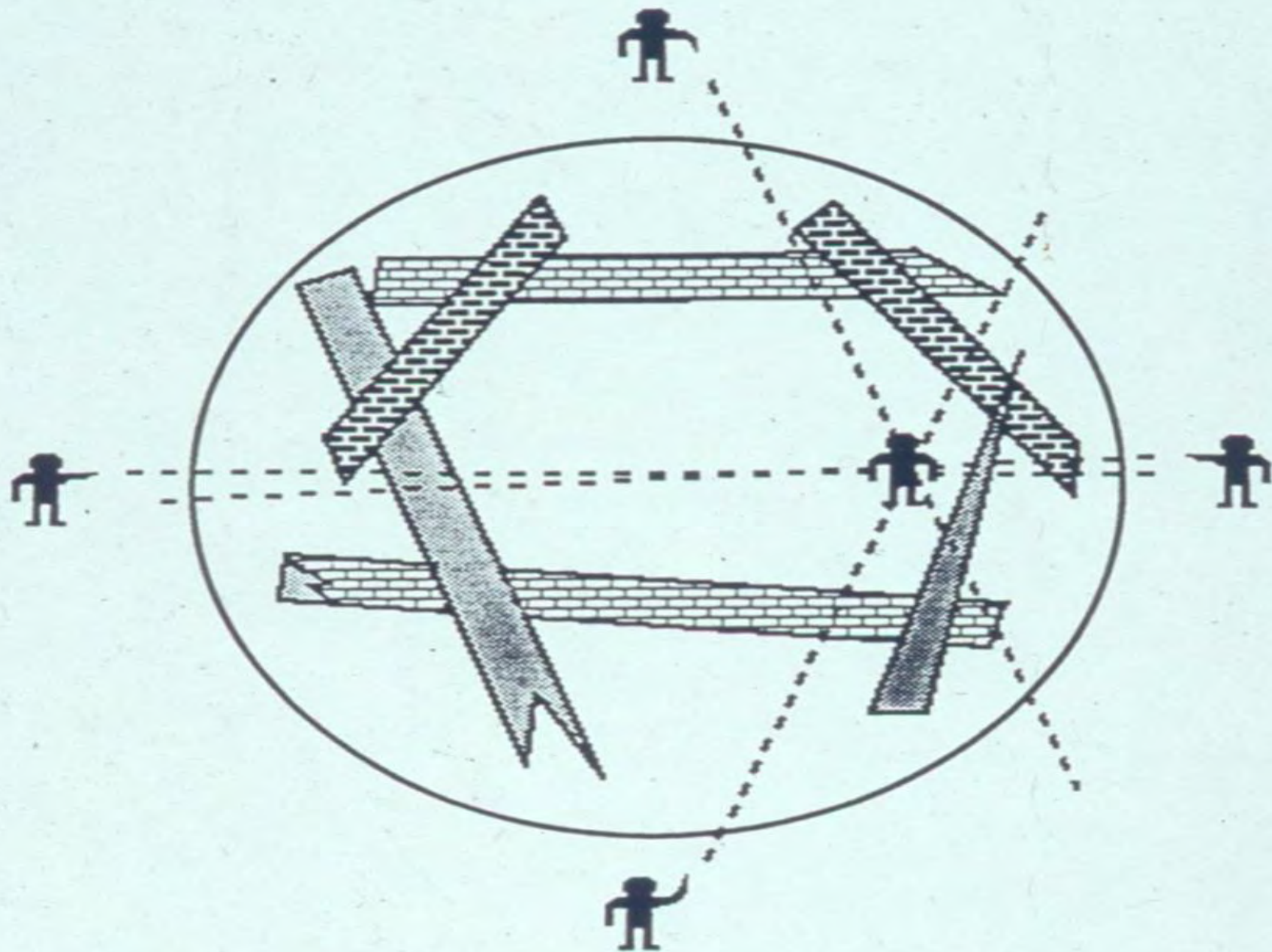
Stage 2: Surface Search And Rescue

- Hail Searches
- Physical Search
- Survivors trapped by non-structural items
- Survivors trapped near the surface
- Engine and Truck Company Skills & Equipment



Marcos Townsend / AFP

re



Physical Search Procedures

- Organize personnel to search area
 - Requires team leader
 - Establish good communications with IC
 - Use buddy system
- Use building plans to plot progress and direct teams
- Use hailing procedure if appropriate
- Use proper search marking procedures
- Enter if structure is sound





Stage 3: Void Space Search & Rescue

**--May Require USAR skills
(shoring, cutting
breaching heavy lifting)**

**--After Major Quake,
USAR resources will be
spread thin**

**--Engines & Trucks will be
compelled to improvise until
more help arrives**

We are looking for live people trapped within collapsed structures, in Survivable Void Spaces



Survivor uncovered—and later rescued by L.A. County Fire-Fighters in a 9-hour rescue operation in Haiti

This is a Survivable Void Space



Bystanders heard voices within a 3-story building Collapse in Haiti. CA-TF2 members unburied both women and extricated them alive 9 hours later.

In a disaster, some Stage 3 operations will be performed by first responder personnel on Engines, Trucks, Squad, and Patrols using appropriate caution until USAR resources are available.



The use of common methods (i.e. cribbing, etc) can be critical to safety in these disaster situations



Access to Void Spaces may require manpower-intensive Cutting and breaching operations



In Addition to USAR units and teams, who has this equipment?

Searching for survivors trapped in Survivable Void Space and Conducting rescue in Confined space voids





Determine location of survivors by visualizing, voice, by tapping, and Point Last Seen

Thermal Imagers & USAR technical search equipment helps identify survivors

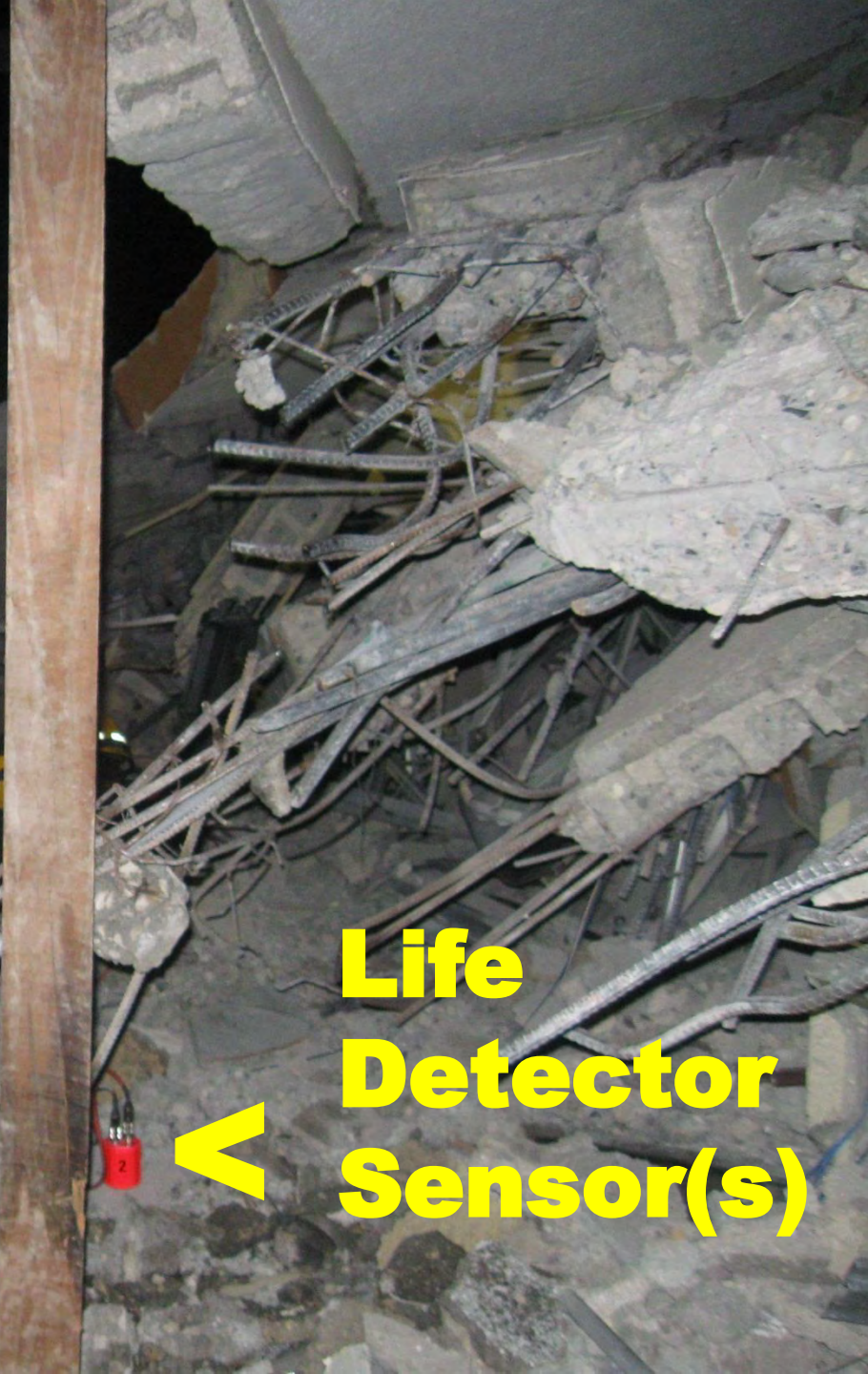


**Life Detector Sensor
(Used to Detect
Vibrations and Sounds
From Victims Trapped
Within Collapses)**



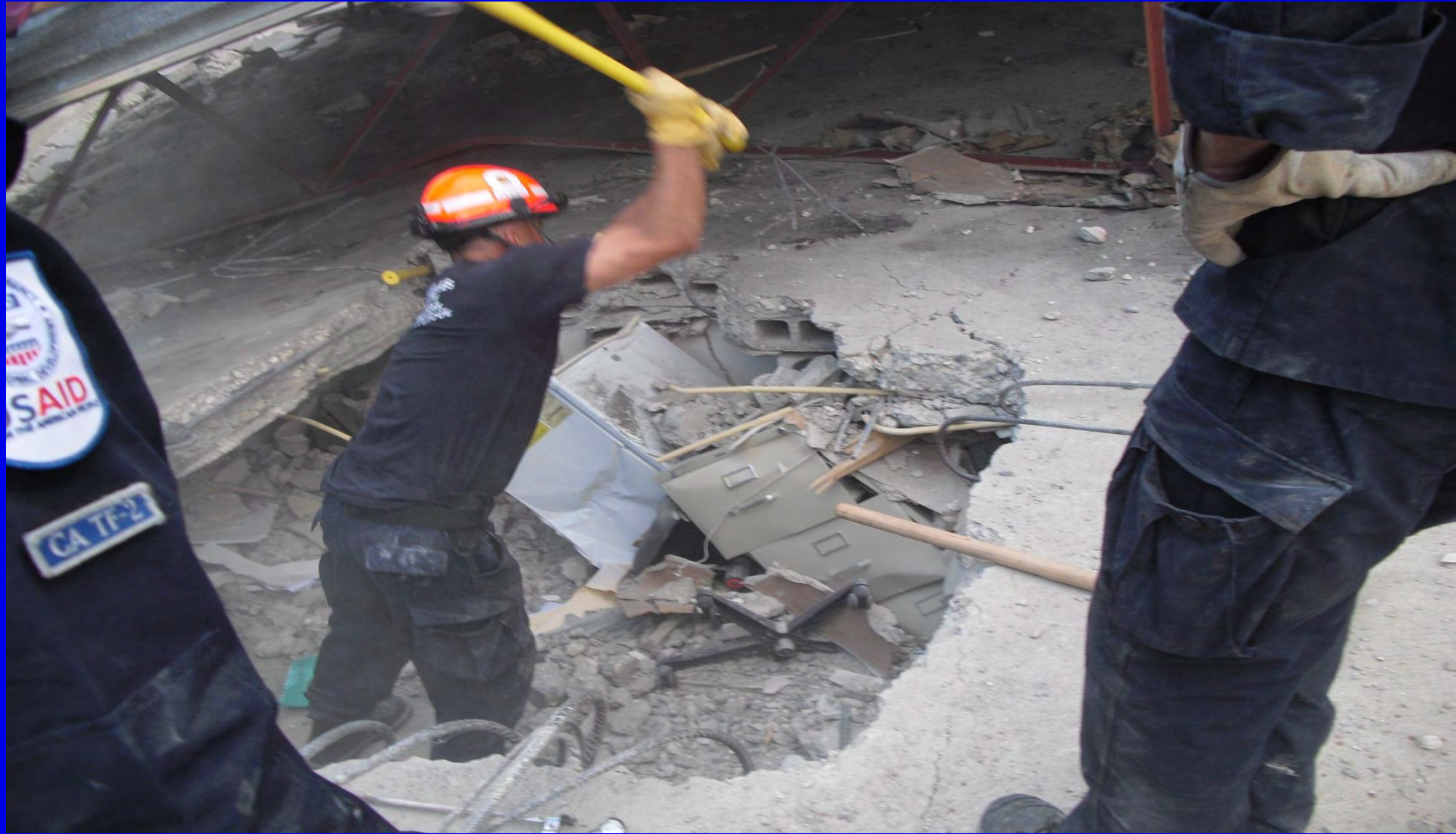


**Life
Detector
Control
Unit**



**Life
Detector
Sensor(s)**





In a disaster, specialized tools are unlikely to be available at all collapses. First responders must be prepared to use basic tools

Close to Survivors: Careful Hand Work Now



Use of Pry Bars and other Hand Tools



**Cutting Rebar with Rescue Saw
(Maintain Protector Line or Extinguisher in Place)**

Contact with Victims

- Encourage victims not to give up
- Explain situation
- Assess victim position, entrapment, and medical condition
- “Interview” victim about other occupants
- Leave rescuer(s) with victim if safe
- Continue search until all victims are accounted for
- Report to IC with findings



Note the I.V. bags hung by FFPM's treating two Trapped victims as they are rescued in a 9-hour Operation. It's important to treat trapped Survivors to help prevent Crush Syndrome.

I.V. in Patients 1 & 2 Now



I.V.'s and other treatment during lengthy rescue ops



**In Haiti, a woman was located after delayering operations
Opened up this void space and bystanders heard her
Calling for help after being trapped for 6 days**



A standard digital camera inserted into the hole showed rescuers the woman's position and the configuration of the void space. This information proved very helpful in her successful rescue



**CA-TF2 FFPM maintaining contact with the woman
During the entire rescue operation**



First physical contact with the trapped woman

Treating and extricating survivors trapped in survivable void spaces can be dangerous, time-consuming, and requires caution



CA-TF2 members extricating the woman from debris in the space



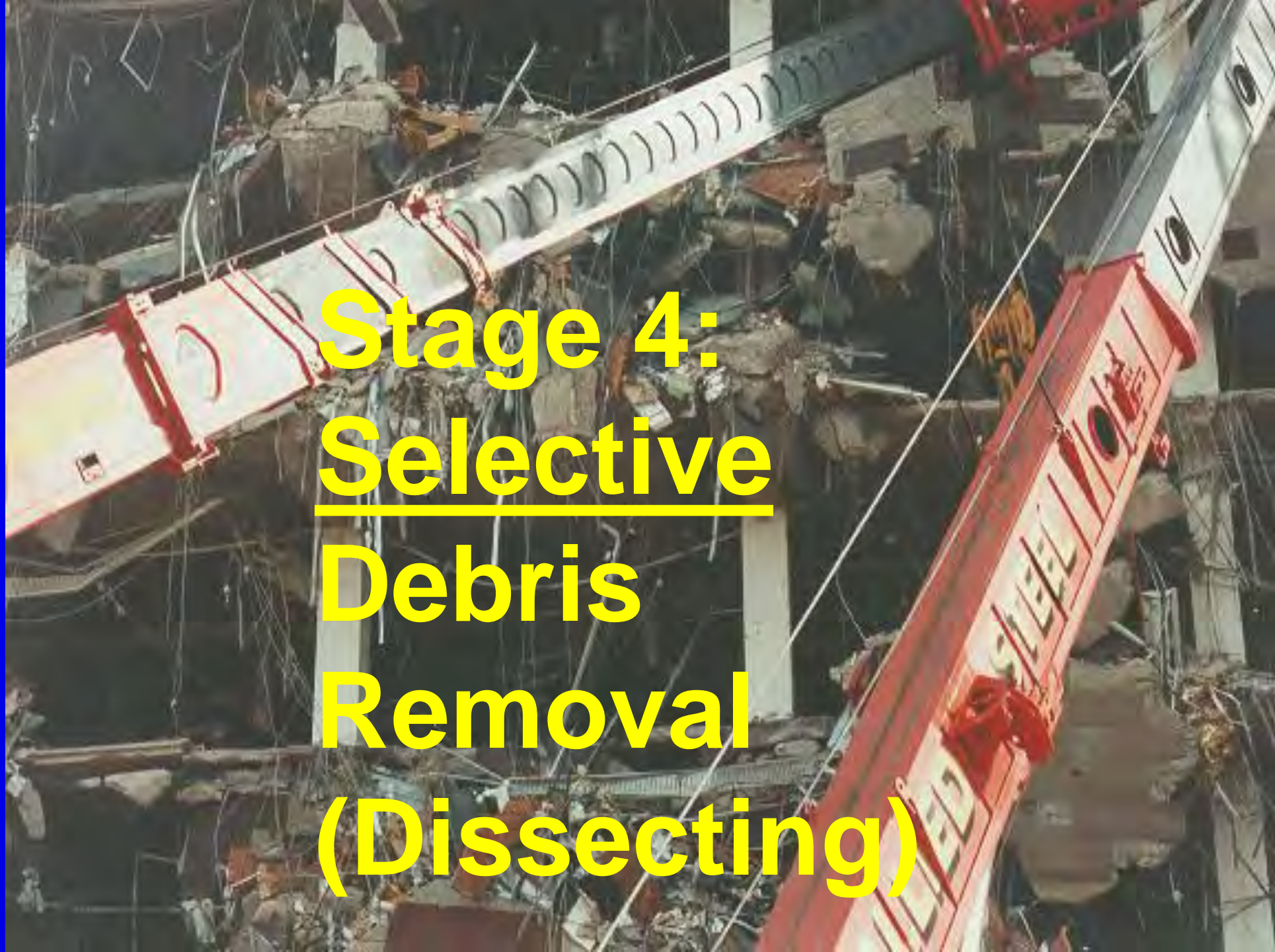
Debris cut away to reveal the woman in the void space



Clearing a path for a backboard and for extraction



Completion of successful rescue



**Stage 4:
Selective
Debris
Removal
(Dissecting)**

Selective Removal To Open Up Hidden Void Spaces



Stage 5: General Debris Removal



STAGE 5:

ONLY after all other potential life-sustaining voids have been physically or technically explored for signs of victims, and after there is reasonable assurance that no survivors remain inside the collapse.



INSARAG Asia/Pacific

Australia (contact)

- Australia Task Force 1 (Queensland) - IEC: **Heavy USAR Team** (2008)
- Australia Task Force 2 (New South Wales) - IEC: **Heavy USAR Team** (2012)

China (contact)

- China International Search And Rescue - IEC: **Heavy USAR Team** (2009)

Japan (contact)

- Japan Disaster Relief Team - IEC: **Heavy USAR Team** (2015)

Korea (contact)

- Korea Disaster Relief Team - IEC: **Heavy USAR Team** (2011)

Malaysia (contact)

- Special Malaysia Disaster Assistance and Rescue Team - IEC: **Heavy USAR Team** (2016)

New Zealand (contact)

- New Zealand USAR - IEC: **Heavy USAR Team** (2015)

Singapore (contact)

- Singapore Operation Lionheart Contingent - IEC: **Heavy USAR Team** (2013)

*The primary intention of the **INSARAG External Classification (IEC)** system is to provide a better understanding of the individual abilities of USAR teams making themselves available for international assistance. Having teams classified according to a standard will enable disaster-affected countries to prioritise acceptance of international response support from USAR Teams who can add proven value to their national capacity. The IEC is an independent, verifiable, voluntary process that has received unanimous acceptance through the INSARAG.

Southern California Earthquake Plan

Collaborative Planning Effort



Cal OES
GOVERNOR'S OFFICE
OF EMERGENCY SERVICES



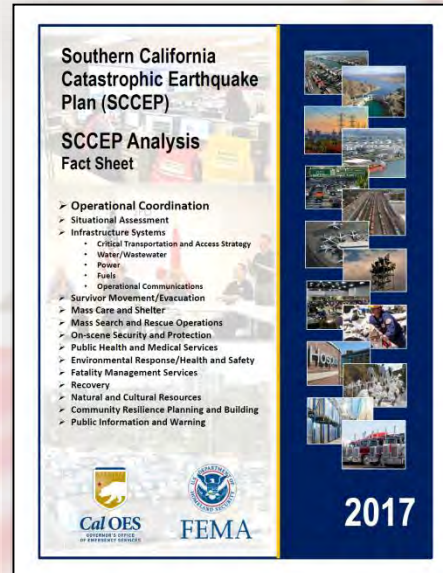
FEMA

Operational Coordination Fact Sheet Overview

Support Concept

The Fact Sheet addresses specific considerations within four functional operational structures:

- 1) Unified Coordination Group
- 2) Branch and Division Boundaries
- 3) Initial Operational Support Structure
- 4) Integration of Response and Recovery Operations



Patrick T. Hammond Sr.
SESC, Disaster Planning Unit
patrick.hammond@caloes.ca.gov
Office: 916.845.8777

October 5, 2017

11
2

Southern California Earthquake Plan Under The Cover

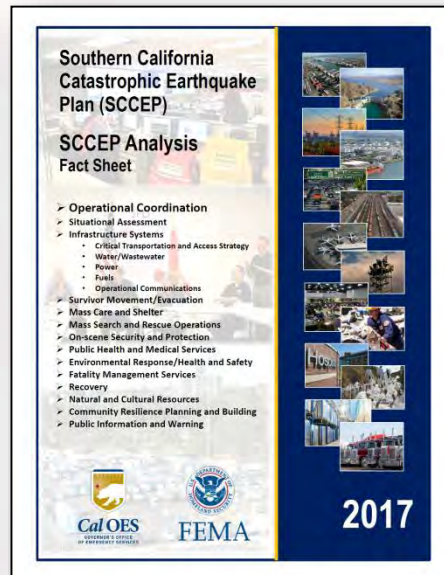


Cal OES
GOVERNOR'S OFFICE
OF EMERGENCY SERVICES



FEMA

Operational Coordination Fact Sheet



Purpose

Situation

Operational Coordination

- Joint State/Federal – Unity of Effort and Unified Command
- Functional Geographic Operational Structure – Branches/Division Boundaries
- Initial Operational Structure
- Local and State Coordination Requirements
- State Emergency Management Coordination
- Federal Emergency Management Coordination
- NGO Coordination Requirements
- Key Decisions Required in Executing
- Critical Considerations
- Critical Information Requirements
- Critical Assumptions
- Regional Planning Focus

Concept of Operations Phases

- Phase 1 (Pre-Incident)
- Phase 2 (Response)
 - Phase 2a (Immediate Response)
 - Phase 2b (Deployment and Employment)
 - Phase 2c (Sustained Response)
- Phase 3 (Long Term Recovery)

Recovery Coordination

- Key Recovery Positions/Groups/Functions
- Regional State Organizations with Roles in Response and Recovery
- SoCal Recovery Support Associations
- Federal Organizations with Roles in Response and Recovery

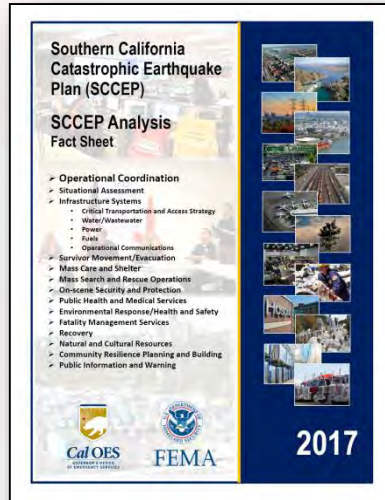
References

11

3

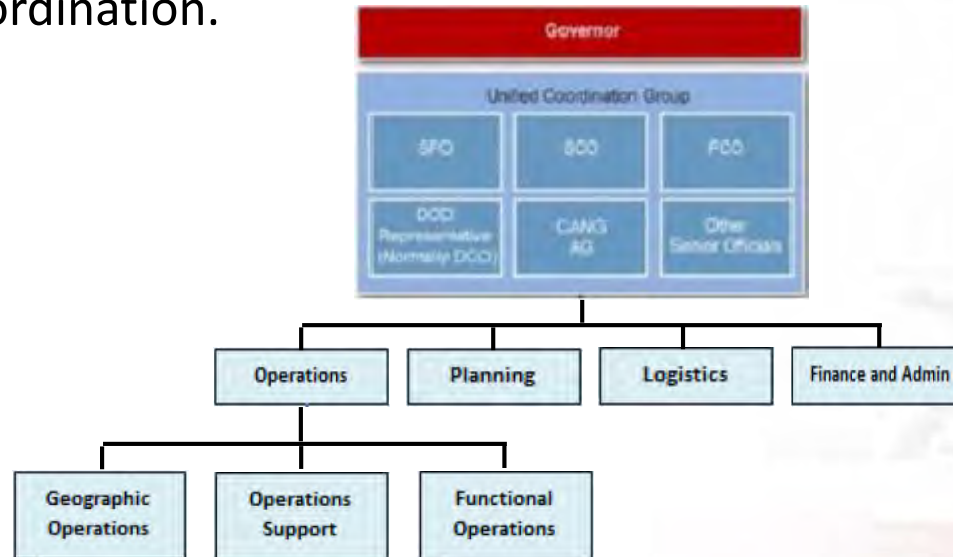
Southern California Earthquake Plan

Operational Coordination Fact Sheet Purpose



This fact sheet supports a *Joint State/Federal Analysis* of an earthquake response for the Operational Coordination core capability. This fact sheet describes the impact of a catastrophic earthquake in the Southern California area, the requirements for Operational Coordination, and the capabilities and enablers for executing Operational Coordination.

- Geographic Operations
- Operations Support
- Functional Operations

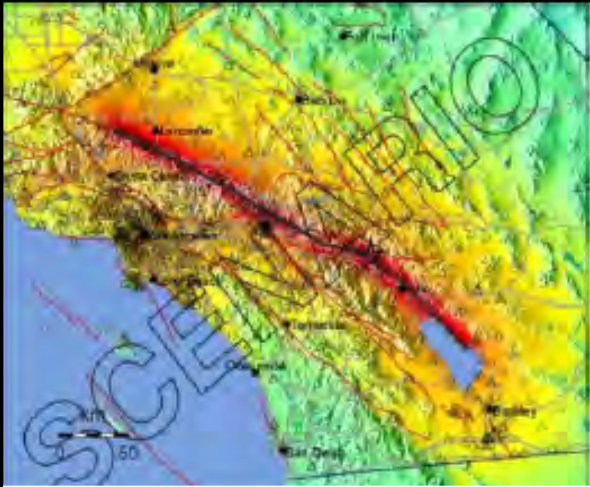


Southern California Earthquake Plan

Situation - Threat



S2 - San Andreas Fault (SAF) Impacts Based on 2008 Shakeout Data

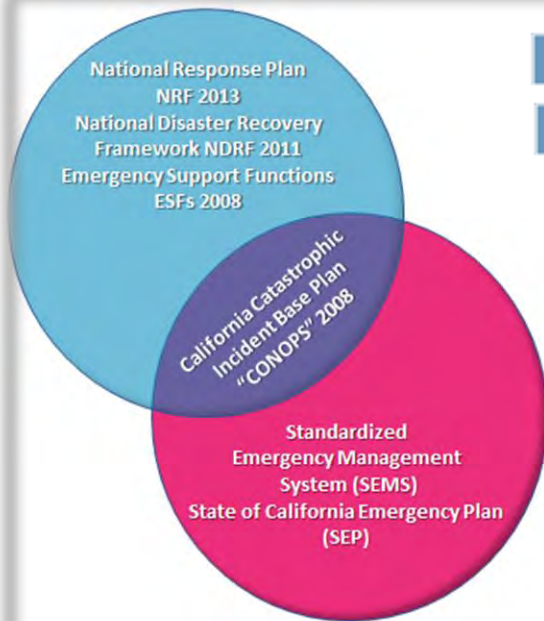
Risk - Shake Maps for Southern California's Complex Fault System	
Regional Shake Map	Impact Description
	<p>Impacted Counties: Imperial, Kern, LA, OC, Riverside, San Bernardino, San Diego, and Ventura</p> <p>San Andreas Fault (SAF)—Southern/S2 M 7.8: This scenario (aka "ShakeOut 2008") would have a widespread impact on California because the SAF runs through each of the mentioned counties and exposes over 20 million people and over 6 million buildings to shaking damage. As evidenced by the ShakeMap, those communities nearest the SAF would experience severe to violent shaking, with residual effects rippling outward from the main fault, causing up to \$41 billion in economic losses. Following the event, as much as 17,000 households could be displaced.</p>
Situational Planning Analysis	
<p><u>1,800</u> deaths</p> <p><u>53,000</u> injuries</p> <p><u>300,000</u> buildings significantly damaged (1 in 16)</p> <p><u>1,600</u> ignitions requiring a fire engine, <u>1,200</u> exceed capability of first engine</p> <p><u>4,500</u> rescues</p>	<p><u>542,000</u> individuals require mass care and shelter, to include those with access, functional and other special support needs. This includes 10% (<u>50,000+</u>) toddlers and infants</p> <p><u>2.5 million</u> individuals shelter-in-place and need basic resource support (e.g., food and water)</p> <p><u>267,000</u> displaced household pets</p> <p><u>\$213 billion</u> damages</p>
	<p>11</p> <p>5</p>

Southern California Earthquake Plan

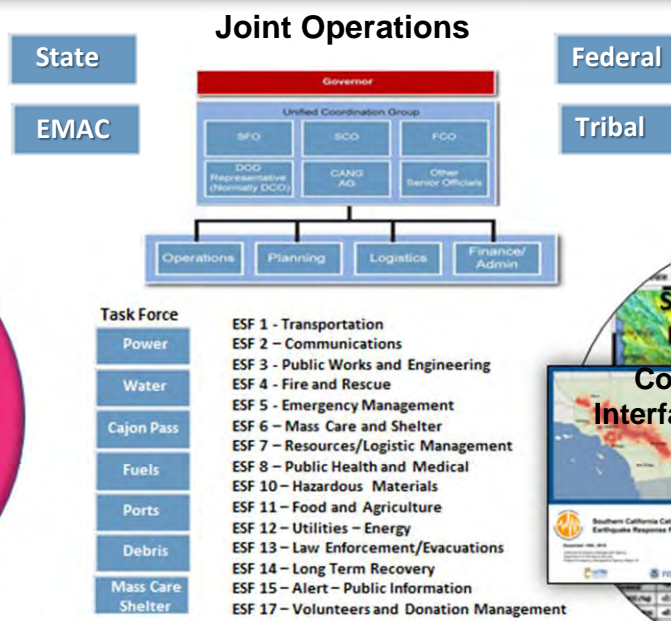
Putting it all Together



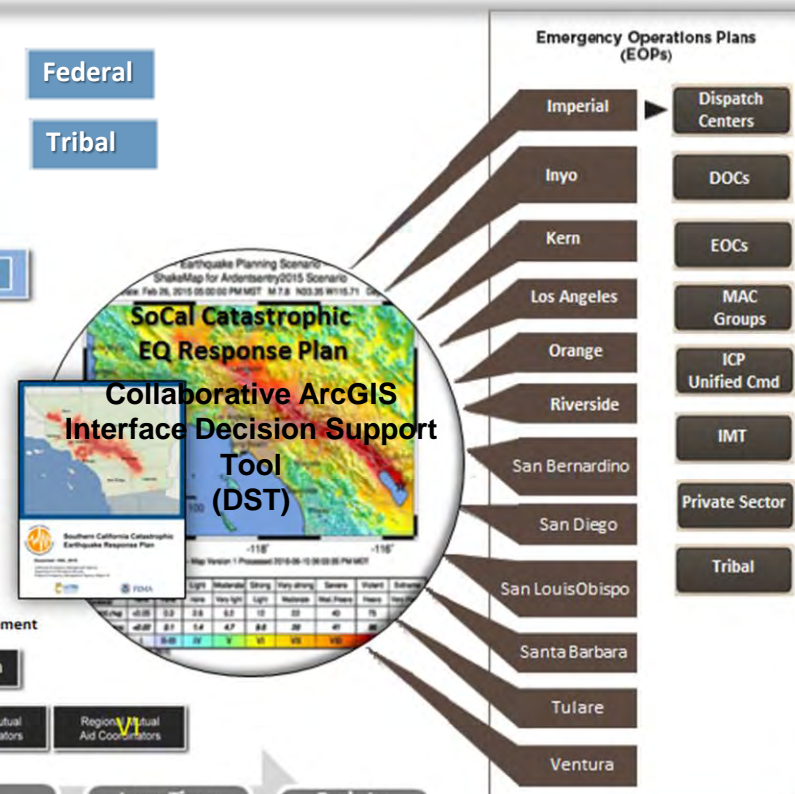
Leveraging Existing Plans and Technical References



Operational Structure Coordination/Collaboration



Collaborative Planning Team Understanding the Situation and Developing the Plan

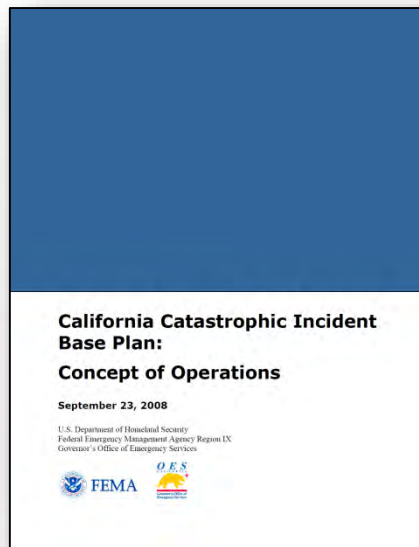


Southern California Earthquake Plan

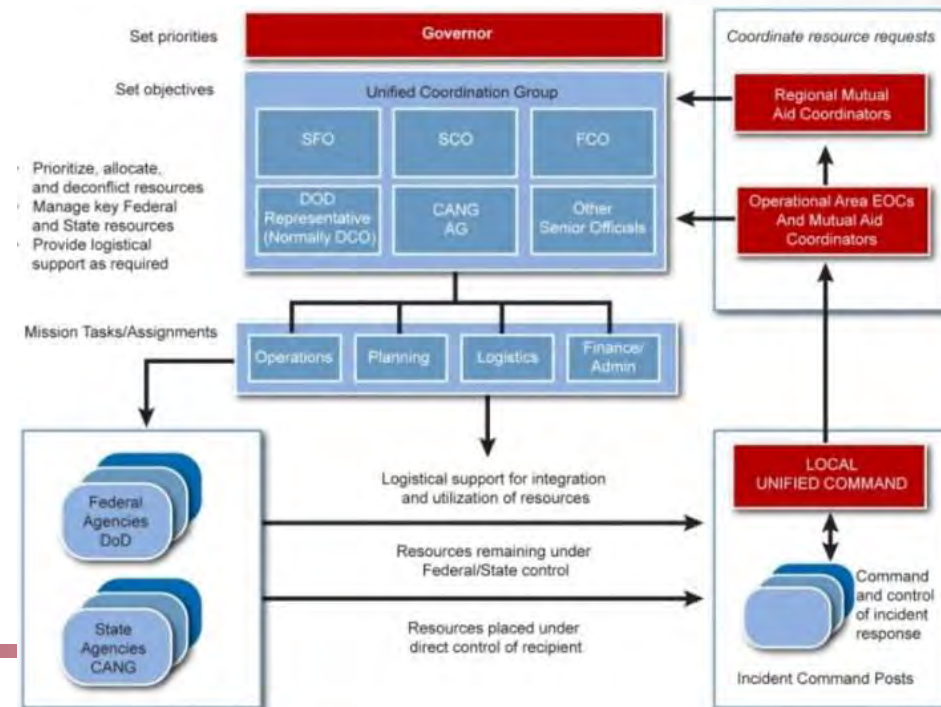
Joint State/Federal – Unity of Effort and Unified Command



The “Unified Coordination Group” concept will remain consistent throughout the Operations organization to the Branch and Division/Group level. As a result, State/FEMA support operations may have joint positions (local, state and/or Federal) throughout the organization. State and federal emergency management organizations will be formed consistent with the 2008 Catastrophic Incident Base Plan (CONOP). The Base Plan describes the activation of state and federal operations.



Ref: Page 14 Handout



Southern California Earthquake Plan



Cal OES
GOVERNOR'S OFFICE
OF EMERGENCY SERVICES

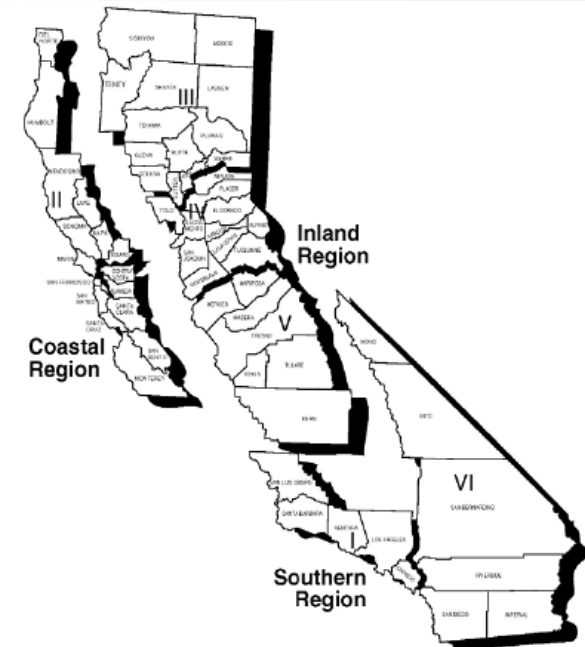


FEMA

Local, State, Federal, Tribal and NGO Coordination Requirements

Cal OES has primary responsibility for coordinating the State's response and liaison between the federal and regional/local Governments and the Private Sector. Cal OES divides operations into three regions and each has a Regional EOC – Southern Region (Regional Emergency Operations Center (REOC) - Los Alamitos), Inland Region (REOC-Sacramento), and the Coastal Region (REOC-Walnut Creek) – which are activated during disaster incidents and are the primary coordination points for the regional/ local governments. The REOCs report to the SOC.

California's Mutual Aid Regions

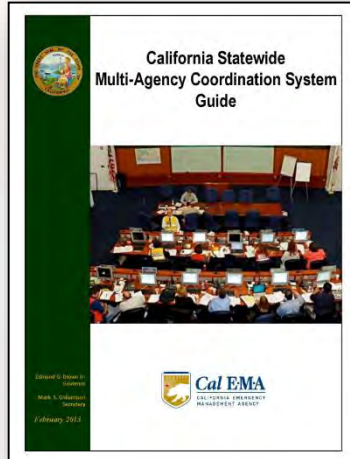


Key for Success – Multi-Agency Coordination System (MACS)

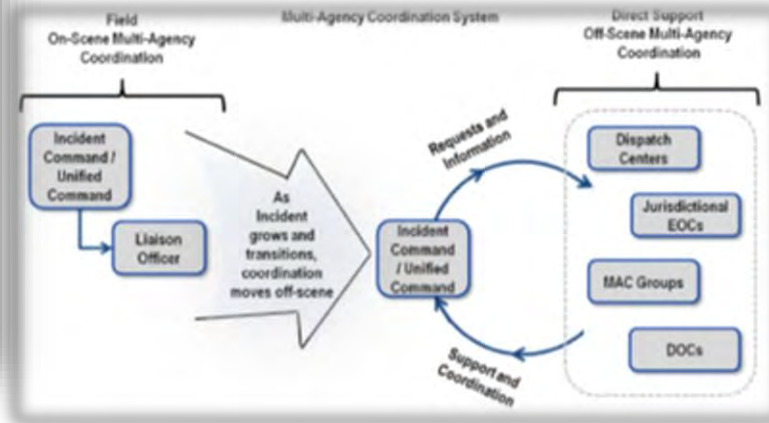
As a means of achieving state/federal and private sector coordination and support during multiple major incidents, the use the Multi-Agency Coordination System, or MACS was originally developed by FIRESCOPE/Cal OES Board of Directors as a standardized business process for prioritizing the allocation of critical resources and managing an integrated communications and information system for emergencies.

Southern California Earthquake Plan

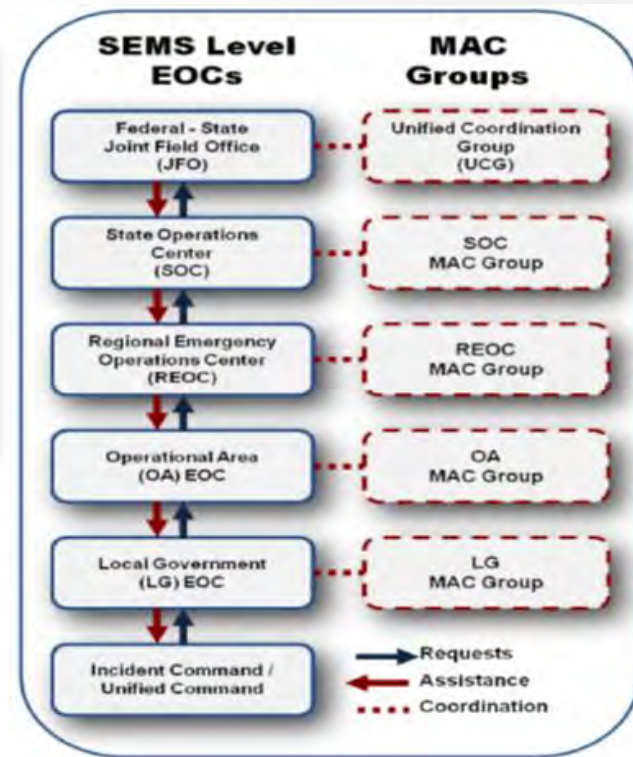
Multi-Agency Coordination System (MACS)



California - State Emergency Management System (SEMS)



SEMS Level EOCs and MAC Groups



Southern California earthquake related State resources, including State-to-State mutual aid resources, will be prioritized and allocated to local Incident Command authorities in accordance with the California MAC Group procedures.

Southern California Earthquake Plan

Key Decisions Required in Executing



Unified Command Structure

- Operational ICS organizational support structure.
- Prioritization of resource allocation based on impact and need.

Coordination and Communications:

- Establish and Maintain Functional and Interoperable Communications for Responders
- Validate and Provide Internal and External Public Messaging

Emergency Services:

- Establish Air Operations for Emergency Response and Damage Assessment
- Conduct S&R Operations, Reduce Hazards: Suppress Fire Contain HazMat

Health and Human Services:

- Provide Health and Medical Services; Acute Care, Chronic Care, Patient Movement
- Provide Mass Care and Shelter, Including Animals

Infrastructure:

- Stabilize and Provide Critical Lifelines Utilities for Priority Infrastructure
- Re-Establish Logistical Supply Lines: Sea Ports, Airports, Railroads, and Roads
- Re-Establish Emergency Power and Fuel Lines of Supply Management
- Conduct Debris Clearance and Disposal

Southern California Earthquake Plan

Critical Information Requirements (CIRs)



Senior level decision makers responsible for implementing this plan require this information when the incident occurs:

- Accurate plot of the impacted area and earthquake magnitudes within the impacted area.
- Ability of government organizations to continue essential functions and services.
- Demographics (including individuals displaced, self-evacuees, injured, and killed) and information on special needs populations and factors that have a significant economic impact.
- Survivor Movement/Evacuation plans, timelines, and instructions (which includes evacuees, medical facilities and animal).
- IMT/Mass SAR/USAR/HazMat Team movement (how fast, where, assignment and logistical support).
- Requests and/or need for state and federal assistance.
- Status of emergency proclamations, declarations and EOC activations.
- Location, capabilities, and number of all deployed response resources including equipment, commodities, and personnel.
- Damage to and status of critical facilities, ports, airfields, government buildings, hospitals, infrastructure/lifelines (power, water/wastewater/communications, transportation, fuels) and independencies that cause cascading failures.
- Potential chemical, physical, and natural hazards that may affect the safety and health of response and recovery workers.
- Status of shelters and commodity movement to support.

Southern California Earthquake Plan

Regional Planning Focus – Operational Coordination



Regional Planning Focus - will require CA, NV, AZ, HI to set functional organizational structures to support geographic Branches and Divisions through pre-identified geographic and geo-political boundaries. Each structure will require a separate UCG/JFO for separate State authorities and responsibility for major parts of response operations or logistics support functions.

Fuel

- CA, NV, AZ, HI Governor's Emergency Proclamations and POUS Presidential Declarations to support regional incident response and recovery efforts.
- Managing limited regional fuel distribution between CA, NV and AZ when the primary distribution lines and Los Angeles area refineries are not available for an extended period of time.

Commodities - Re-establishing commodity distribution centers to sustain the existing population across FEMA RIX when primary, fuel dependent transportation networks are not available or restricted due to damaged fuel conveyance systems.

Survivor Support - Provide an effective logistic support and housing sustainment for survivors who choose to temporarily evacuate outside the impacted community or to neighboring states that have limited available resource and economic support capability.

Responder Logistics - Sustain response and support organizations in the impacted area and those in bound while transitioning through a resource constrained environment.

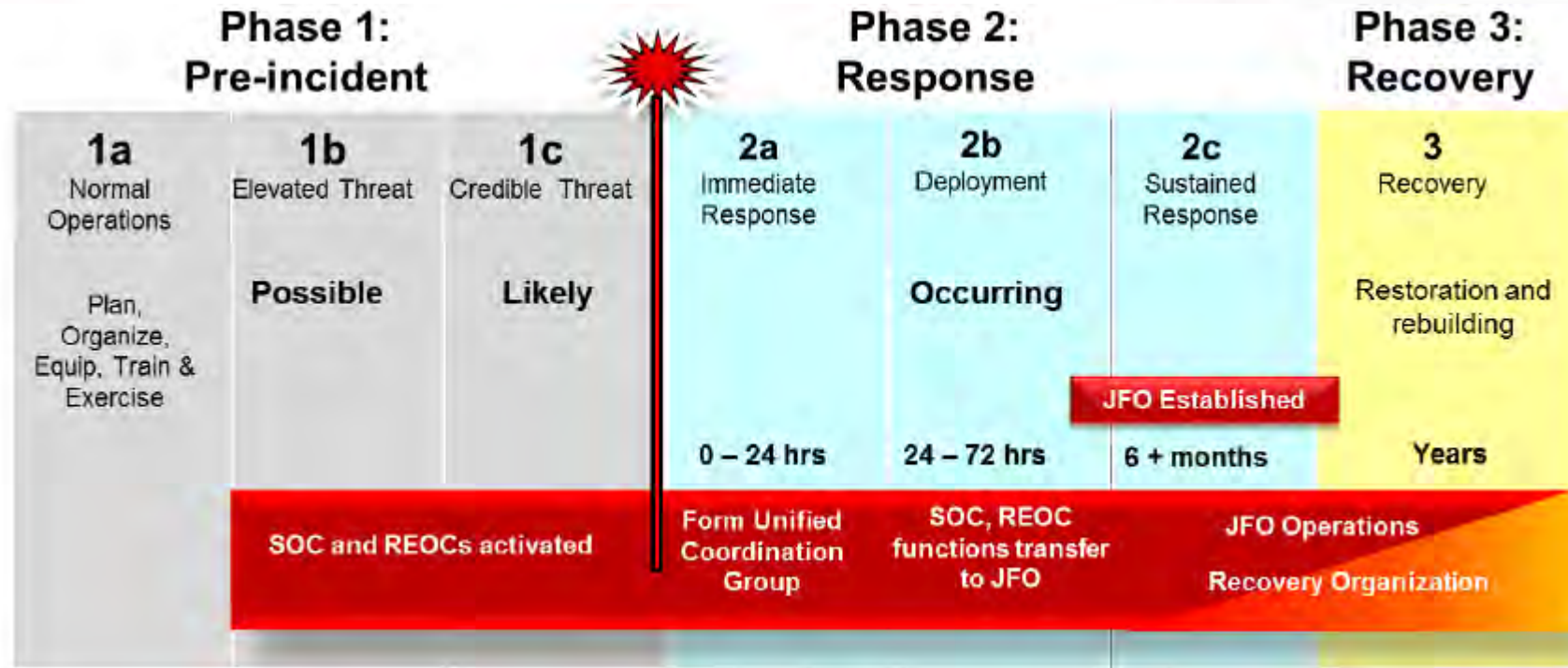
Economic Recovery -Economic and business activities in CA, NV, AZ, and HI back to a healthy state as soon as possible when primary logistical support is reduced or not available for an extended period of time.

Southern California Earthquake Plan

Concept of Operations Phases



The **Concept of Operations** is divided into three distinct phases: Normal Operations, Response, and Long-Term Recovery. Phase 2, Response, is further divided into Activation (Immediate Response), Deployment and Employment, and Sustained Response.

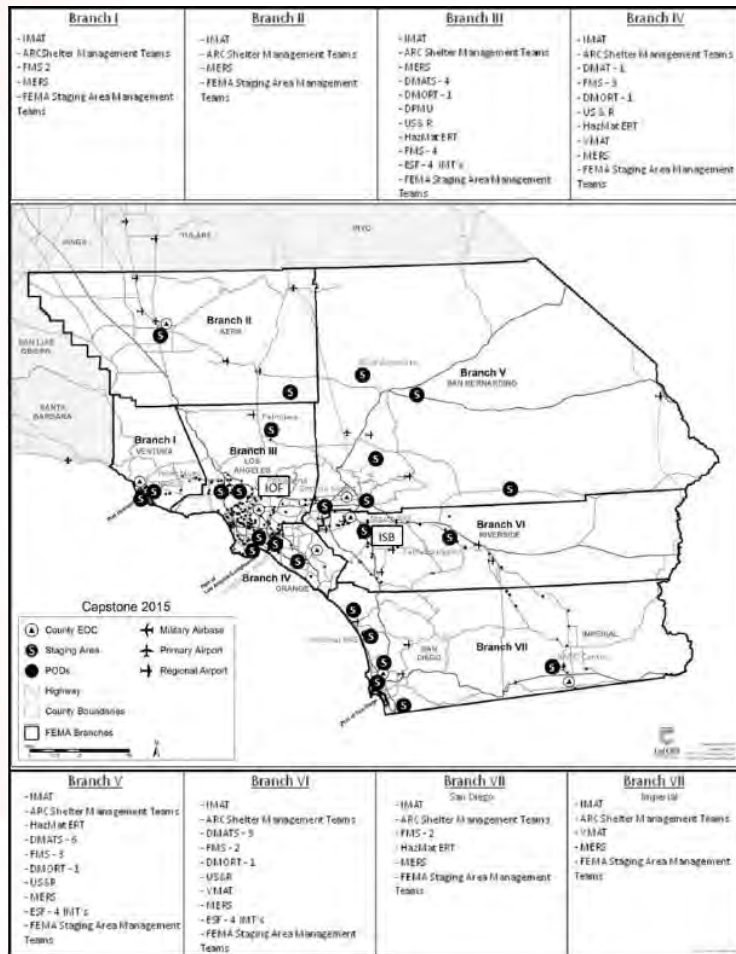


Southern California Earthquake Plan

Geographic Operations – Branch and Division Boundaries



2011 Base Plan Branch and Divisional Boundaries Seven Branches



Discussion Point for 2018 Rewrite ...Breakout 1

Phase 2a - Phase 2a - Geographic Branches and Divisions are established by the joint State and Federal Operations Section in close coordination with OA emergency managers. State and federal representation within Divisions are established to communicate needs/coordinate employment of state and federal resources in accordance with objectives established by the UCG. Division Supervisors are responsible for the management and supervision of assigned resources within their geographical areas, reporting on the progress of operations, the status of assigned resources, and their portion of the IAP.

Source: 2011 SCCERP Annex C Page 178 - 180
Ref: Page 16 Handout

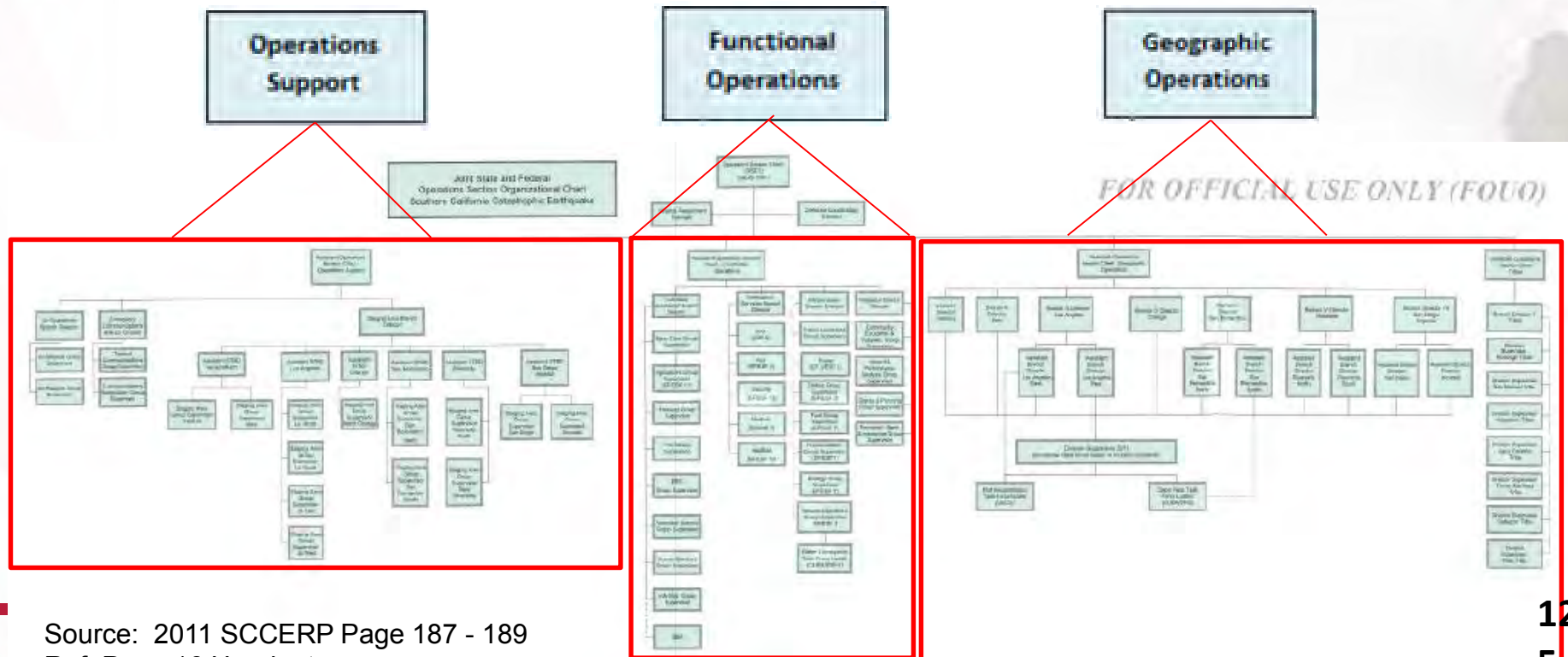
Southern California Earthquake Plan

Initial Operational Support Structure



Discussion Point for 2018 Rewrite ... Breakout 2

Phase 2a – Initial Operational Support Structure is established. The figure below outlines SoCal Catastrophic Earthquake Response Plan (2011 edition) designated initial functional organizational structure to support geographic Branches and Divisions for critical geographic responsibility for major parts of the Operations or Logistics support functions.



Source: 2011 SCCERP Page 187 - 189
Ref: Page 16 Handout

Southern California Earthquake Plan

Transportation Fact Sheet (FS) Analysis Overview



Cal OES
GOVERNOR'S OFFICE
OF EMERGENCY SERVICES



FEMA



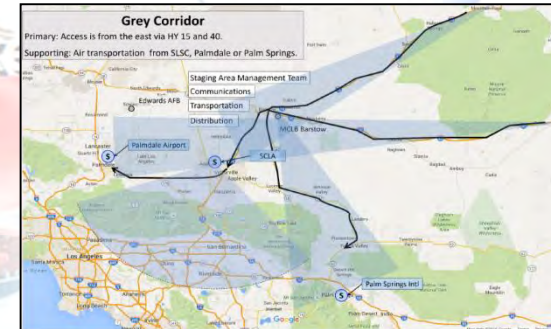
For Planning and Coordination

Transportation Analysis Components

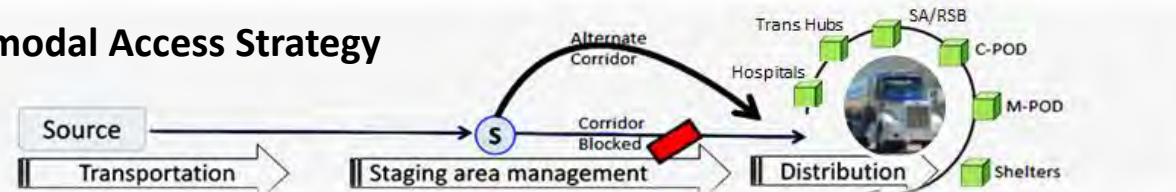
- Surface Transportation
- Aviation Transportation
- Maritime Transportation
- Railway Transportation
- Liquid Fuel Pipeline Distribution
- Restoring Transportation Infrastructure
- Situational Awareness/Assessment
- Lessons Learned



Access Corridors and Consensus March 2017



Multimodal Access Strategy



Source: Transportation FS **Last Mile Connections Linked to Hub and Spoke Distribution**
Ref: Page 5-10 FS dated Jan,2017

“Unclassified//For Official Use Only” (U//FOUO)

Southern California Earthquake Plan

Proposed Federal Staging Areas



Cal OES
GOVERNOR'S OFFICE
OF EMERGENCY SERVICES

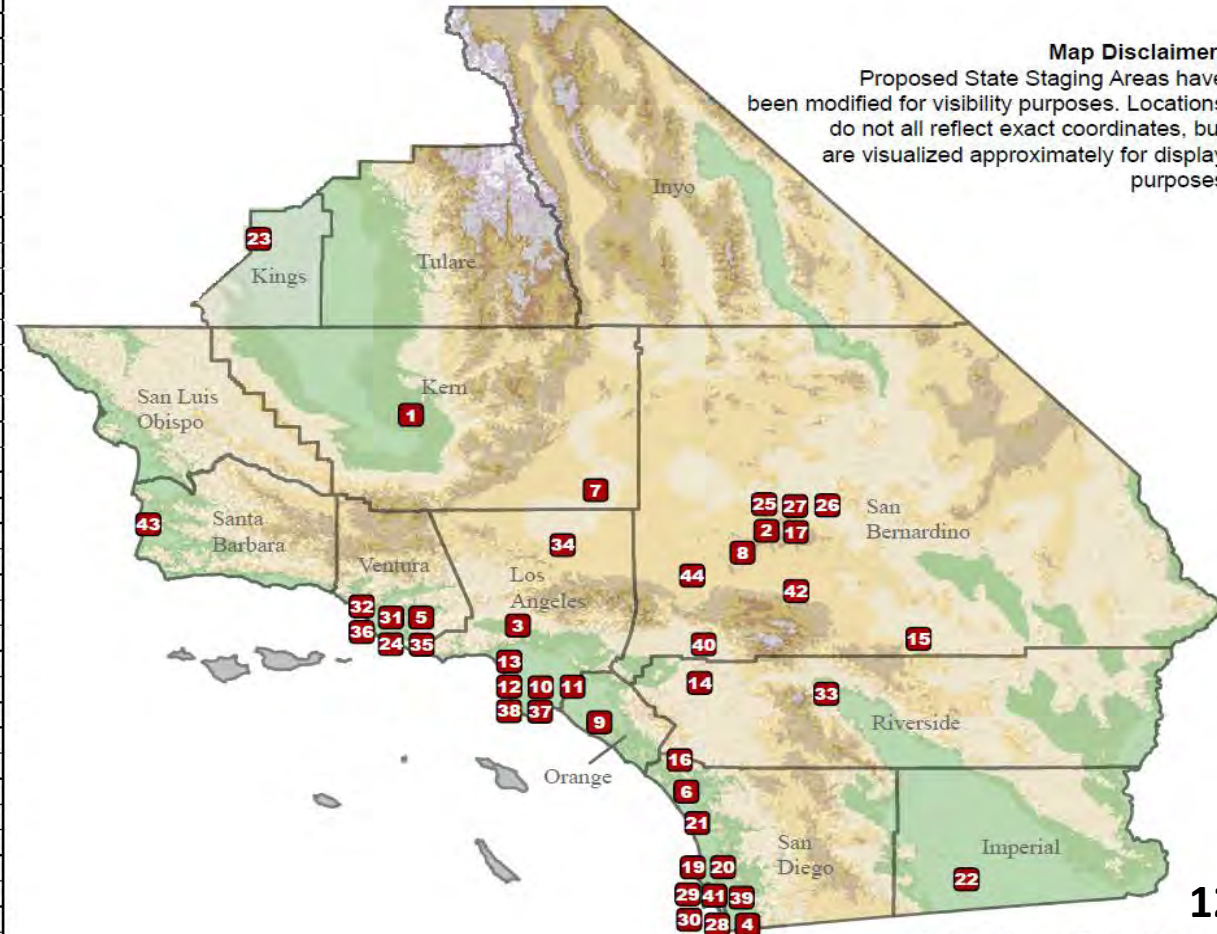


FEMA

■ Staging Area

Map ID	Location	County
1	Bakersfield Municipal Airport	Kern
2	Barstow-Daggett	San Bernardino
3	Bob Hope-Burbank	Los Angeles
4	Brown Field Municipal Airport	San Diego
5	Camarillo Airport	Ventura
6	Camp Pendleton MCAS	San Diego
7	Edwards AFB	Kern
8	Fort Irwin	San Bernardino
9	John Wayne Airport	Orange
10	Long Beach Airport	Los Angeles
11	Los Alamitos AAF	Orange
12	Los Angeles AFB	Los Angeles
13	Los Angeles International	Los Angeles
14	March Air Reserve Base	Riverside
15	Marine Air Ground Task Force Training Center	San Bernardino
16	Marine Corps Air Station Camp Pendleton	San Diego
17	Marine Corps Logistics Base, Barstow	San Bernardino
18	Marine Corps Mountain Warfare Training Center	Mono
19	Marine Corps Recruit Depot San Diego	San Diego
20	MCAS Miramar	San Diego
21	McClellan-Palomar Airport	San Diego
22	Naval Air Station El Centro	Imperial
23	Naval Air Station, Lemoore	Kings
24	Naval Air Station Point Mugu	Ventura
25	Naval Air Weapons Station China Lake	San Bernardino
26	Naval Air Weapons Station China Lake	San Bernardino
27	Naval Air Weapons Station China Lake	San Bernardino
28	Naval Base Coronado (North Island Naval Air Station)	San Diego
29	Naval Base Point Loma	San Diego
30	Naval Base San Diego	San Diego
31	Naval Base Ventura County	Ventura
32	Oxnard Airport	Ventura
33	Palm Springs International Airport	Riverside
34	Plant 42-Palmdale	Los Angeles
35	Point Mugu NAS	Ventura
36	Port of Hueneme	Ventura
37	Port of Long Beach	Los Angeles
38	Port of Los Angeles	Los Angeles
39	Port of San Diego	San Diego
40	San Bernardino International	San Bernardino
41	San Diego International	San Diego
42	Twenty-nine Palms	San Bernardino
43	Vandenberg AFB	Santa Barbara
44	Victorville, Southern California Logistics Airport	San Bernardino

For Planning and Coordination

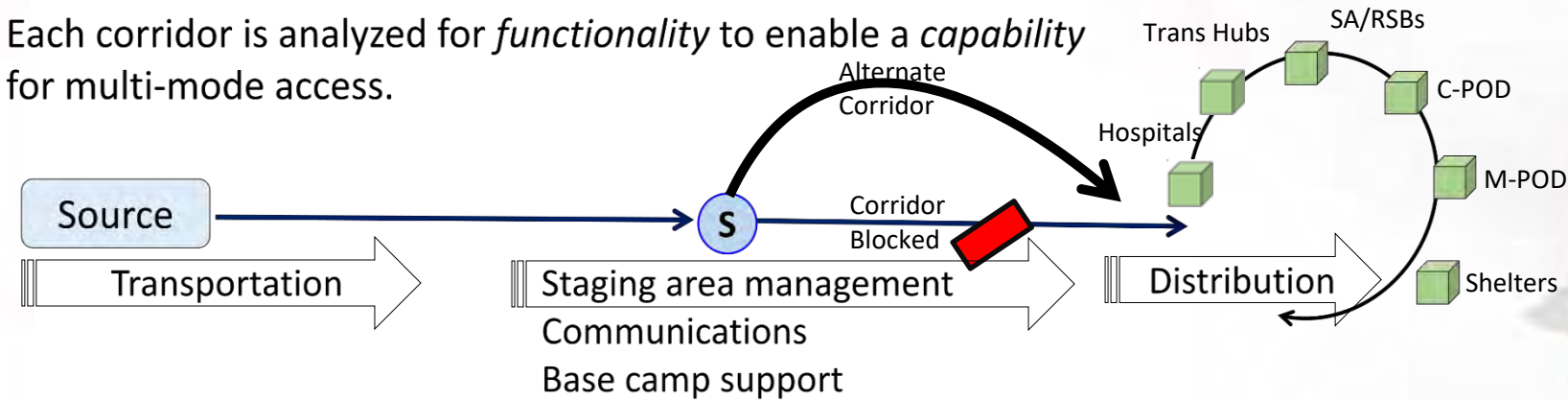


Map Disclaimer:
Proposed State Staging Areas have been modified for visibility purposes. Locations do not all reflect exact coordinates, but are visualized approximately for display purposes

For Planning and Coordination

How was the corridor system designed?

Each corridor is analyzed for *functionality* to enable a *capability* for multi-mode access.



- Staging Area Management Team
- Surface Transportation
- Air Transportation
- Communications
- Distribution

Emphasis on *functionality (not mode)* simplifies the assignment of teams, equipment and the identification of primary and supporting facilities to create a functioning corridor.

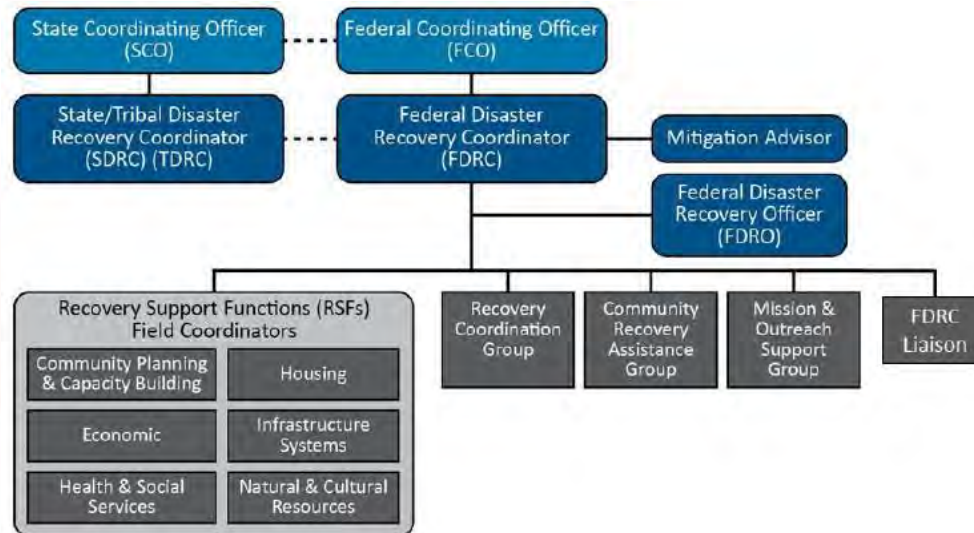
Southern California Earthquake Plan

Recovery Coordination

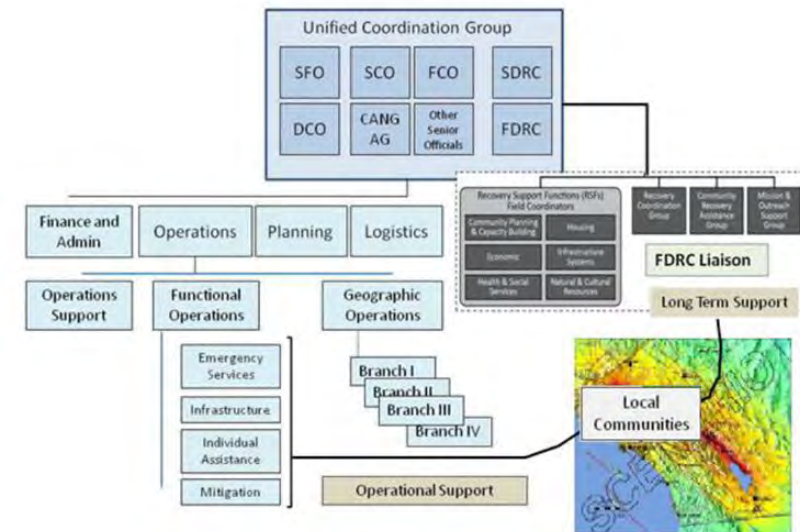


The recovery organization will be established consistent with the State Disaster Recovery Framework (SDRF) and National Disaster Recovery Framework (NDRF). On a functional level, state Recovery Functions (RFs) and federal Recovery Support Functions (RSFs) are established by state and federal counterparts. The State of California oversees the regional coordination of recovery, sets priorities, and directs assistance where it is needed. Through state, federal, and regional liaisons, OAs and local jurisdictions receive support for the recovery mission consistent with the SDRF and NDRF.

Recovery Organizations



Integration of Response and Recovery Operations



Source: 2011 NDRF 32
Ref: Page 16 Handout

Southern California Earthquake Plan

Concept of Operations / Operational Phases



Quick Overview - Concept of Operations / Operational Phases



Phase 1 - Reoccurring Coordinate with private, non-profit, local, state, tribal and federal stakeholders to prepare for a catastrophic earthquake. Actions include planning, organizing, training, equipping, exercising, evaluating and taking corrective actions.

2a-Ends when comm.'s for emergency responders is established. Local response is underway and initial damage assessments are communicated to the joint State/Federal Operations Section and the UCG is fully established. State and federal teams are activated and receive missions for lifesaving deployment to identified Staging Areas to support local response.

2b-Ends when geographic organizational Branch/ Divisions support structure in place and functional. Resources from state and federal teams are staged and employed in support of common objectives set by the UCG.

2c -Ends when response activities set conditions for long term recovery. Sheltering is transitioned to temporary housing including rebuilt or repaired homes or other temporary housing. Critical Lifelines are operating at full commercial capability while maintaining response operations.

Phase 3 -ends when recovery activities have set the conditions for long-term community recovery. Temporary housing has transitioned to rebuilt homes or other permanent housing, schools are open, tourism is re-established, and critical facilities and infrastructure are self-sustaining through normal transactions.

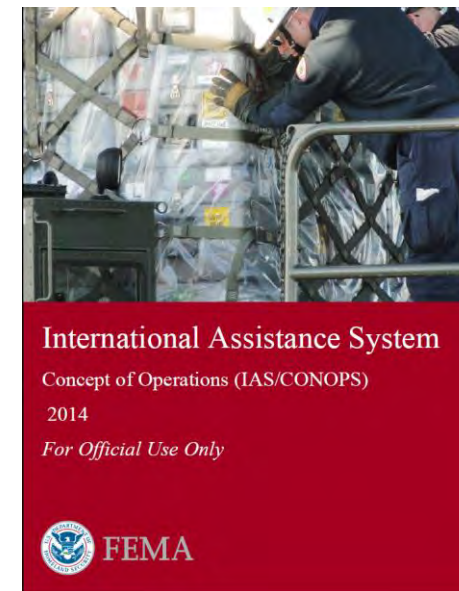
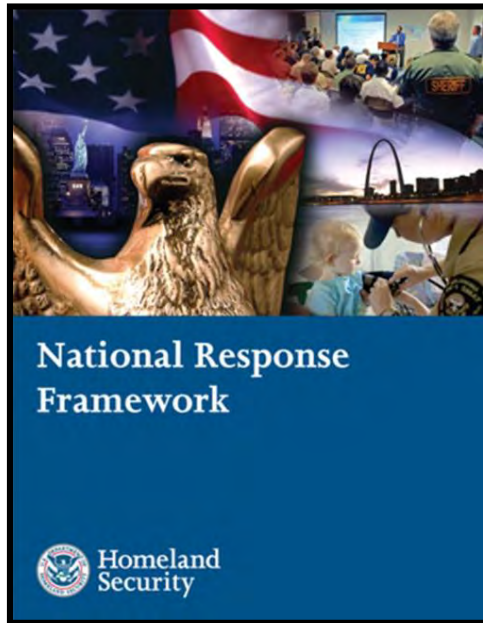
The Integration of International US&R (USAR) Assets

**IST Continuing Education
February 2 -3, 2013**



FEMA

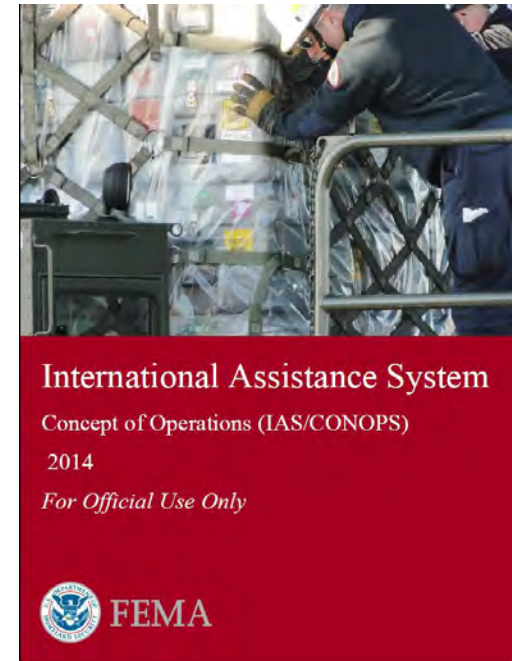
THE IAS as POLICY



FEMA

The CONOPS

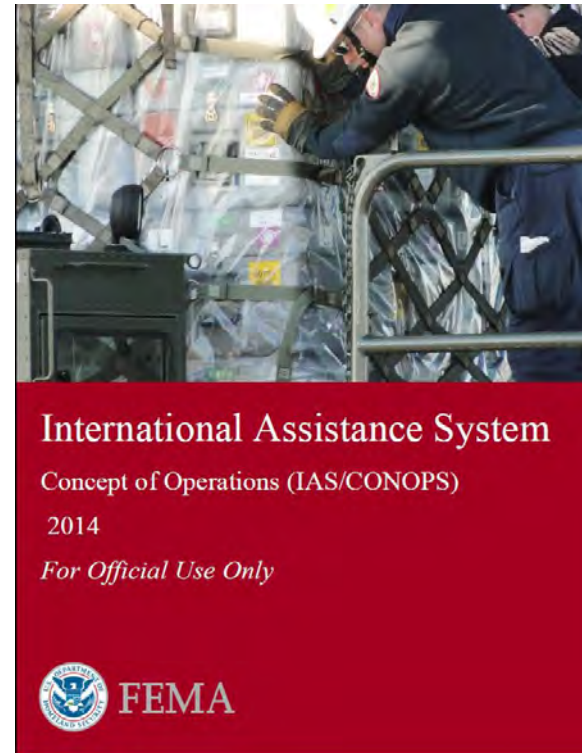
- Documents that guide our actions:
 - IAS CONOPS – Annex K
 - FEMA US&R Operations Manual Annex A CONOP
 - INSARAG Guidelines (2010 Edition)



FEMA

2015 International Assistance System Concept of Operations (IAS CONOPS)

- Vetted and cleared by Interagency May 2015
- Cleared by National Security Council June 2015
- Signed by FEMA Administrator July 9, 2015



The IAS is always engaged.

The IAS maintains a ***TIERED APPROACH*** that mirrors both the NRF and the International Coordination Support Annex (ICSA) as follows:

Level 3 - Watch/Steady State: FEMA/NWC and DOS/CMC monitor possible international interest in a U.S. domestic disaster.

Level 2 – Operations Level 2: In support of USG diplomatic interests or FEMA's direction, FEMA International Affairs Division convenes the International Resources Coordination Group (IRCG).

Level 1 – Operations Level 1: If numerous offers of assistance are accepted or Pull requests are anticipated, FEMA will elevate the IAS to Level 1.



FEMA

International Resources Coordination Group (IRCG)

- FEMA, with DOS, leads the interagency **International Resources Coordination Group (IRCG)** based at FEMA HQ in the NRCC
- IRCG supported by Resource Support Section (**RSS**), ESFs-**6, 7, 9, and 15**, as well as **OCC**



FEMA

International Resources Coordination Group (IRCG)

- The IRCG will be staffed by representatives from participating IAS agencies such as **CBP, DOD, HHS, USDA** and other USG agencies and partners, as required, depending on nature of request or offer.



FEMA

Incoming Foreign First Responders

The IAS may be utilized to bring in **international first responders**, when deemed necessary by FEMA and the USG:

- Search and Rescue Teams
- Medical Emergency Teams



FEMA

How it works.....

- Request is initiated for international US&R assistance through the NRCC ESF-9 desk and the IRCG
- The IRCG moved the request through to USAID/OFDA and the DOS
- USAID/OFDA makes official USG request to United Nations Office for the Coordination of Humanitarian Affairs (UN OCHA), and;
- Places request on Virtual On-Site Operations Coordination Center (Virtual-OSOCC) <http://vosocc.unocha.org>

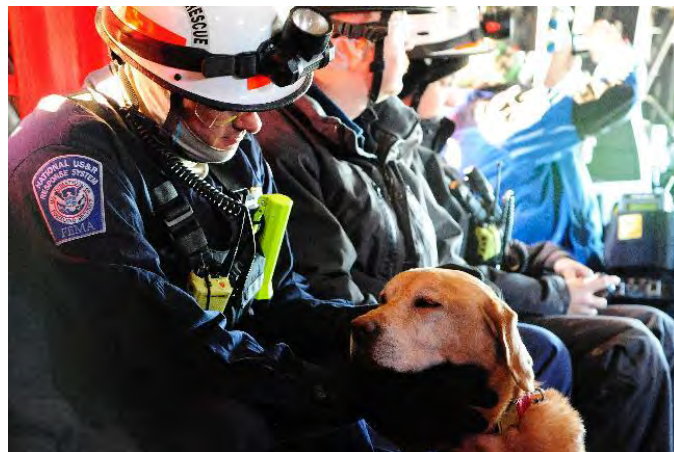


FEMA

The Challenges

Legal:

- Tort Liability
- Damages Compensation
- Certification
- Credentialing



Tactical:

- Processing & Reception
- Command and Control
- Duty to Respond



FEMA

So, look who showed up...

- All unsolicited offers should be communicated to the DOS Crisis Management Services (DOS/CMS)
- DOS/CMS enters them into International Assistance Tracker (IAT)



FEMA

Unsolicited offers

- **DOS/CMS notifies FEMA NRCC International Affairs Desk who notifies ESF-9 Desk of offer**
- **US&R Branch, in consultation with USAID/OFDA reviews and notifies DOS/CMS via the IRCG of FEMA's decision to accept or decline**



FEMA

Accepted offers

- **FEMA coordinates entry with CBP**
- **CBP serves as the central point of contact for all regulatory agencies overseeing entry**
 - Visa assistance
 - Entry permission for:
 - Specialized communications equipment
 - Search, rescue and medical equipment
 - Food
 - Canines
 - Pharmaceuticals



FEMA

Reception and Departure Center (RDC)

- **USAID/OFDA will establish and manage the RDC, including staffing. Inter-agency support may include FEMA, CBP, DOS and regulatory agencies.**
- **FEMA will issue a PSMA to USAID for RDC operations.**
- **International US&R teams will be directed to Aerial Port of Debarkation (APOD)**
- **CA-TF2 or VA-TF1 staff RDC similar to UN US&R Coordination Cell**
- **USAID/OFDA provide Liaison to US&R IST**



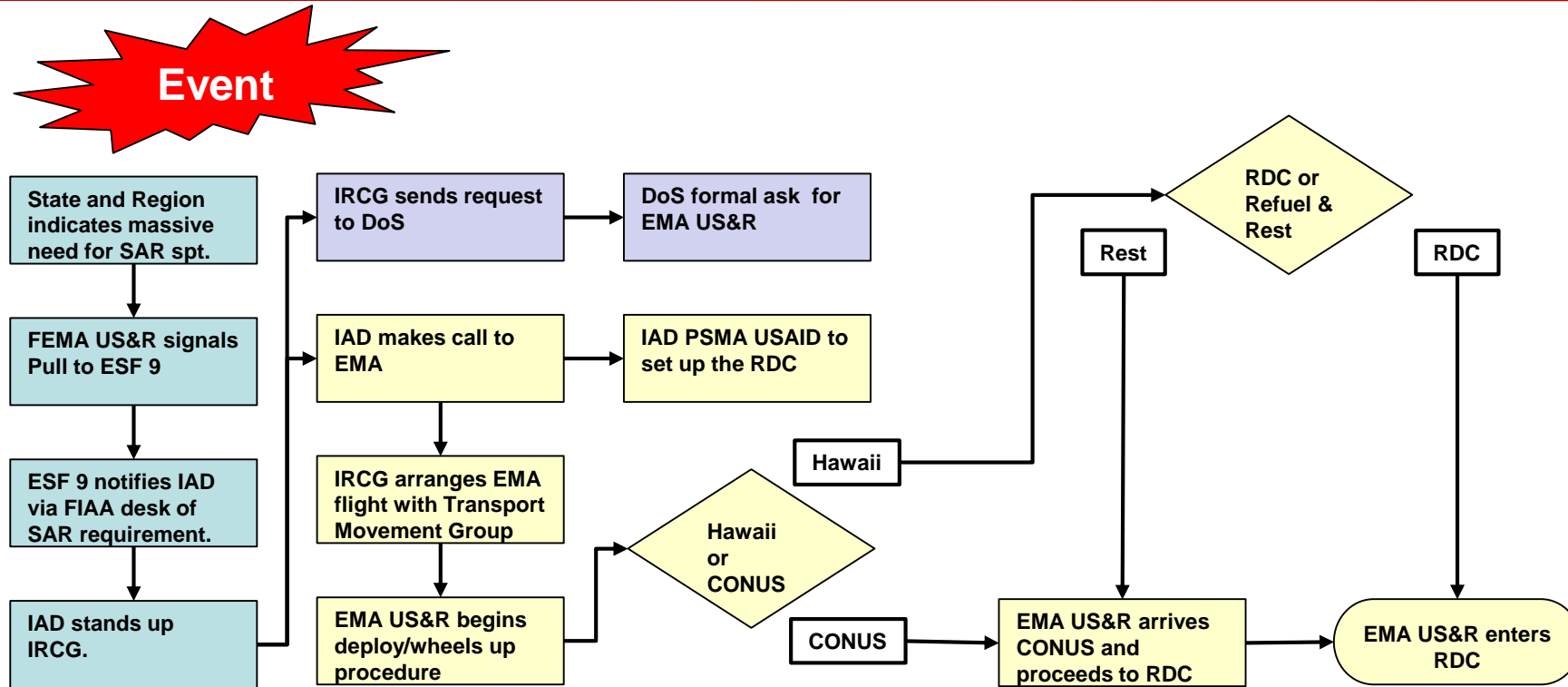
RDC (continued)

- **FEMA issues Mission Assignment to ESF-13 for security of international teams**
- **Once in-bound teams are cleared through the RDC, ESF-9 takes responsibility for deployment.**
- **Teams demobilize through the RDC.**



FEMA

US&R PULL PROCESS



FEMA

US&R IST Role

- **Provide logistical support through IMAT**
 - Interpreters (via OFDA/IST Liaison)
 - Guides
 - Food, water
 - Fuel
 - Transport
 - Maps
 - BoO location



FEMA

US&R IST Role (continued)

- **Integrate teams into operational planning and provide intake briefing to include:**
 - Situation update
 - Search definition, methodology, documentation and reporting
 - US&R Code of Ethics
- **Ensure integration of international SAR resources and associated overhead and logistical requirements**



FEMA

USAID/OFDA

- **IRCG will keep USAID/OFDA advised of all incident response operations, including operations of international US&R teams**
- **USAID/OFDA will post regular updates and briefings on Virtual OSOCC and to other arriving international US&R teams**
- **USAID/OFDA will notify the international US&R community of a reduction or termination of need for additional teams**



FEMA

Demobilization

- **US&R IST must be prepared to start the demob process of international teams**
- **US&R IST will assist teams during move from RDC to point of departure**



FEMA

Demobilization

- **International teams will be demobilized consistent with standard policies and procedures**
 - IST will conduct exit interview/demob agreement with local IC/staff
 - IST will coordinate with US&R Branch, FEMA Region, IMAT/JFO for possible reassignment
 - IST will develop demob plan in coordination with US&R Branch, FEMA Region, IMAT/JFO



FEMA

Demobilization

- **IST(s) will work with assigned international US&R teams on demob travel and associated issues involved with their return to RDC**
- **International US&R teams will conclude operations, address demob activities and return to RDC and point of departure for arrangement of transportation**



FEMA

QUESTIONS ?



FEMA



**Thank You for the opportunity to share
with you today**

***Brian S. Marshall, Fire & Rescue Chief
California Governor's Office of Emergency Services
Office (916) 845-8711
Brian.Marshall@CalOES.ca.gov***